

BOTH WELL

HIGH PRESSURE FITTINGS

**FORGED
CARBON ALLOY
STAINLESS STEEL
THREADED SOCKETWELD**



TAIZHOU TAIZHOU

BOTH-WELL (TAIZHOU) STEEL FITTINGS CO., LTD.

NO.669, TEN-MU ROAD, JIANGYAN ECONOMIC DEVELOPMENT ZONE,
JIANGYAN CITY, JIANGSU, CHINA (225500)

TEL : 86-523-88863918(19-25)

FAX : 86-523-88863926





INTRODUCTION

IT IS THE POLICY OF **BOTH-WELL** STEEL FITTINGS CO., LTD. TO MANUFACTURE HIGH PRESSURE FORGED STEEL PIPE FITTINGS MEETING WITH ASME AND ANSI B16.11 STANDARD AND RELEVANT ASTM MATERIAL SPECIFICATIONS AND/OR CUSTOMER'S SPECIFICATION / REQUIREMENTS.

WE ARE MANUFACTURING ABOVE MENTIONED FITTINGS UNDER THE CONTROL OF OUR QUALITY SYSTEM, DEVELOPED IN ACCORDANCE WITH ASME CODE SECTION I AND VIII QUALITY SYSTEM GUIDELINE AND ISO-9001:2008 QUALITY SYSTEM. THE WRITTEN QUALITY SYSTEM REQUIREMENTS ARE IMPLEMENTED STRICTLY BY EVERY INDIVIDUAL IN OUR COMPANY.

THE SCOPE OF OUR PRODUCTS AS FOLLOW :

TYPE : A. ELBOW, TEE, COUPLING, HALF COUPLING, CAP, PLUG, BUSHING, UNION, OUT-LET, SWAGE NIPPLE, BULL PLUG, REDUCER INSERT AND HEX . NIPPLE, STREET ELBOW, BOSS, ETC.
B. SOCKET-WELD, THREADED (NPT OR PT TYPE), BUTT-WELDING



SIZE : NPS 1/8" ~ 4".

RATING : PRESSURE : THREADED END - 2000 / 3000 / 6000 LBS.
SOCKET-WELD END - 3000 / 6000 / 9000 LBS.
BUTT WELD END - SCH40/ SCH80 / SCH160/ XXS.

SPECIFICATIONS : A. DIM.SPEC. :
GB/T 7306,12716. 14383, 14626
ASME B16.11-2009(REVISION OF ASME B16.11-1996)
MSS - SP- 79,83,95, 97 AND BOTH-WELL SPEC.
JIS B0203,B2316
BS 3799—1974
B. MATERIAL SPEC:
ASTM A105, A350 LF2,A106, A312,A234, A403
GB/T 699 20Mn
ASTM A182 (F304, F304L, F316, F316L,F304H, F316H. F317L,F321, F11, F22, F91).
GB/T 1220(0Cr18Ni10Ti, 0Cr18Ni9, 00Cr19Ni10, 0Cr17Ni12Mo2, 00Cr17Ni14Mo2, 00Cr19Ni15Mo3.5, 0Cr18Ni11 Nb, 0Cr25Ni20)
SIZE OF RAW MATERIAL : DIA. 19~110MM ROUND BAR.



MARKING : A . CARBON AND ALLOY STEEL : MARKED BY STAMPING.
B. STAINLESS STEEL :
MARKED BY ELECTRO-ETCHED, JET PRINTED OR STAMPING.
C. 3/8" UNDER: BRAND ONLY.
D. 1/2" TO 4" :
MARKED WITH BRAND, MATERIAL, HEAT CODE, B16
(FOR ASME B16. 11 PRODUCT), PRESSURE AND SIZE .

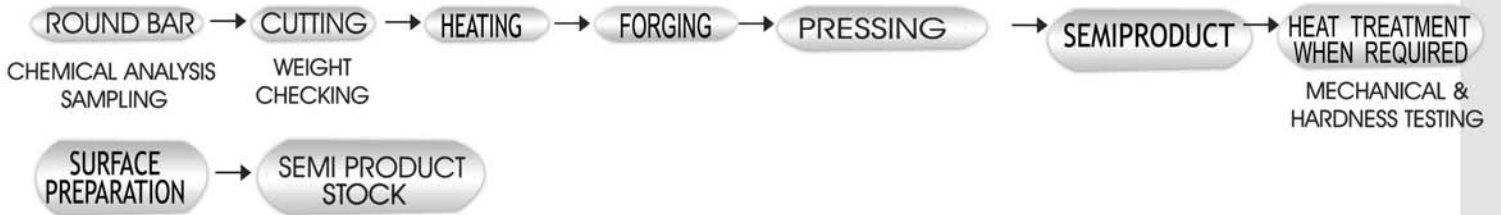
FINISHING : CARBON STEEL- GALVANIZED OR BLACK.
STAINLESS STEEL - PICKLED.

PACKING : CARTON / WOODEN CASE
PLY WOODEN CASE

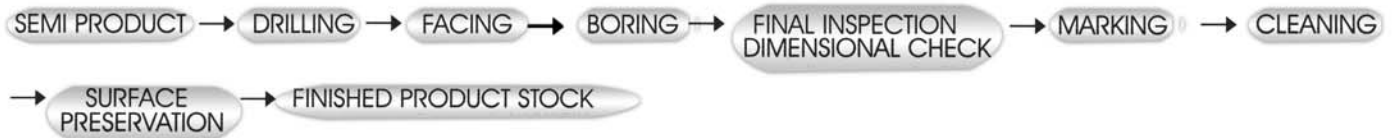


PRODUCTION PROCESS CHART

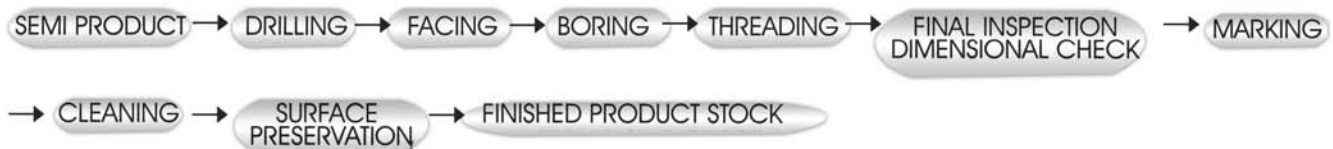
(1) FORGING



(2) MACHINING(SOCKET WELD FITTINGS)



(3) MACHINING(THREADED FITTINGS)



(4) DELIVERY

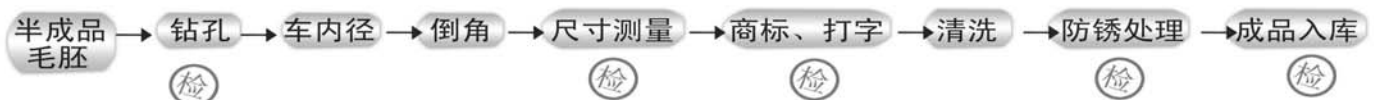


简要作业流程图

一、锻造



二、套焊加工



三、牙口加工



四、交货处理





产品列表

PRODUCT LIST

承插焊管配件

SOCKET-WELDING FITTINGS

鍛造高壓管配件 FORGED HIGH PRESSURE PIPE FITTINGS

ELBOW
90°

承插焊 90°弯头



HALF
COUPLING

承插焊单承口管箍



ELBOW
45°

承插焊 45°弯头



CAP

承插焊管帽



TEE

承插焊三通



BOSS

承插焊单接口管箍



CROSS

承插焊四通



OUTLET

承插焊管座



UNION

承插焊活接头



WELDING
OUTLET

对焊管座



COUPLING

承插焊双承口管箍



INSERT

承插焊渐缩式插接头



螺 纹 管 配 件

THREADED 2000-3000-6000 Lbs

鍛造高壓管配件 FORGED HIGH PRESSURE PIPE FITTINGS

ELBOW
90°

螺纹 90°弯头



COUPLING

螺纹双承口管箍



SQUARE
HEAD
PLUG

方头管塞



ELBOW
45°

螺纹 45°弯头



HALF
COUPLING

螺纹单承口管箍



ROUND
HEAD
PLUG

圆头管塞



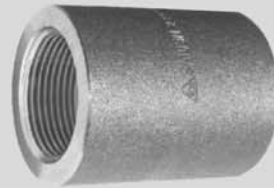
TEE

螺纹三通



REDUCING
COUPLING

螺纹异径双承口管箍



BULL
PLUG

大圆头管塞



CROSS

螺纹四通



CAP

螺纹管帽



BOSS

螺纹单接口管箍



STREET
ELBOW

内外螺纹弯头



HEX
HEAD
BUSHING

六角头内外螺纹接头



OUTLET

螺纹管座



HEX
NIPPLE

六角双接头



UNION

螺纹活接头



HEX
HEAD
PLUG

六角头管塞



SWAGE
NIPPLE

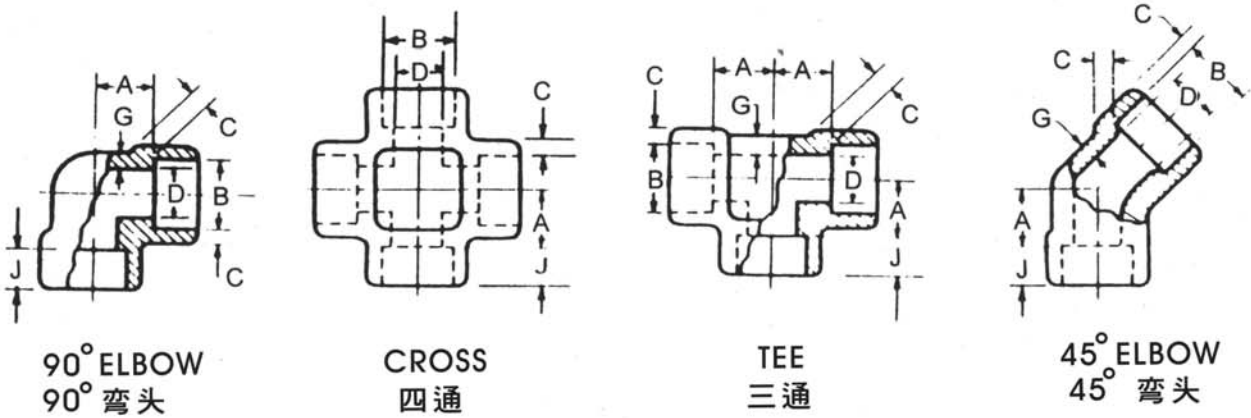
缩径管





承插焊管配件 SOCKET-WELDING FITTINGS

ASME B16.11-2009(ASME B16.11-2001的修订版)



尺寸单位为毫米 Dimensions in Millimeters.

公称管子规格		插口孔径 Socket Bore Dia. (2) B	管件孔径 Bore Diameter of Fittings(2) D			承插口深度 Socket Wall Thickness(1) C						本体壁厚 Body Wall Thickness G			插口深度 Depth of Socket Min. J
DN	Nom. Pipe Size		级别代号 Class Designation			级别代号 Class Designation						级别代号 Class Designation			
			3000	6000	9000	3000		6000		9000		3000	6000	9000	
					Ave.	Min.	Ave.	Min.	Ave.	Min.	Min.	Min.	Min.		
6	1/8	11.2 10.8	7.6 6.1	4.8 3.2		3.18	3.18	3.96	3.43			2.41	3.15		9.5
8	1/4	14.6 14.2	10.0 8.5	7.1 5.6		3.78	3.30	4.60	4.01			3.02	3.68		9.5
10	3/8	18.0 17.6	13.3 11.8	9.9 8.4		4.01	3.50	5.03	4.37			3.20	4.01		9.5
15	1/2	22.0 21.8	16.6 15.0	12.5 11.0	7.2 5.6	4.67	4.09	5.97	5.18	9.35	8.18	3.73	4.78	7.47	9.5
20	3/4	27.6 27.2	21.7 20.2	16.3 14.8	11.8 10.3	4.90	4.27	6.96	6.04	9.78	8.56	3.91	5.56	7.82	12.5
25	1	34.3 33.9	27.4 25.9	21.5 19.9	16.0 14.4	5.69	4.98	7.92	6.93	11.38	9.96	4.55	6.35	9.09	12.5
32	1-1/4	43.1 42.7	35.8 34.3	30.2 28.7	23.5 22.0	6.07	5.28	7.92	6.93	12.14	10.62	4.85	6.35	9.70	12.5
40	1-1/2	49.2 48.8	41.6 40.1	34.7 33.2	28.7 27.2	6.35	5.54	8.92	7.80	12.70	11.12	5.08	7.14	10.15	12.5
50	2	61.7 61.2	53.3 51.7	43.6 42.1	38.9 37.4	6.93	6.04	10.92	9.50	13.84	12.12	5.54	8.74	11.07	16.0
65	2-1/2	74.4 73.9	64.2 61.2			8.76	7.67					7.01			16.0
80	3	90.3 89.8	79.4 76.4			9.52	8.30					7.62			16.0
100	4	115.7 115.2	103.8 100.7			10.69	9.35					8.56			19.0

NOTES :

- (1) Average of Socket Wall Thickness around periphery shall be no less than listed values.
The minimum values are permitted in localized areas.
- (2) Upper and lower values for each size are the respective maximum and minimum dimensions.
- (3) DIMENSIONAL TOLERANCES: see page 8

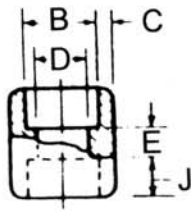
注 :

- (1)承插口沿周边的平均厚度不小于列表位元，局部允许达最小值
- (2)每个规格的较大值和较小值分别对应于最大直径和最小直径
- (3)尺寸公差：参见第8页

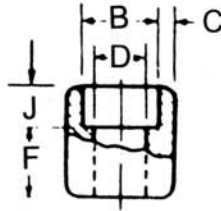


承插焊管配件 SOCKET-WELDING FITTINGS

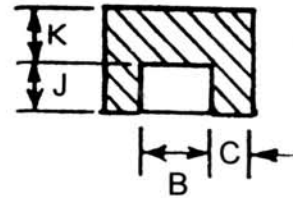
ASME B16.11-2009(ASME B16.11-2001的修订版)



COUPLING
双承口管箍



HALF COUPLING
单承口管箍



CAP
管帽

尺寸单位为毫米 *Dimensions in Millimeters.*

中心到承插口底 <i>Center to Bottom of Socket-A</i>						长度 <i>Laying Lengths</i>		公差 <i>Tolerances ±</i>			端壁厚度 <i>End Wall Thickness K (Min).</i>			公称管子规格	
90° 弯头, 三通, 四通 <i>90 Elbows Tees, Crosses</i>			45° 弯头 <i>45 Elbows</i>			双承口管箍 <i>Couplings E</i>	单承口管箍 <i>Half Couplings F</i>	A	E	F	级别代号 <i>Class Designation</i>			Nom. Pipe Size	DN
级别代号 <i>Class Designation</i>			级别代号 <i>Class Designation</i>								3000	6000	9000		
3000	6000	9000	3000	6000	9000						3000	6000	9000		
11.0	11.0		8.0	8.0		6.5	16.0	1.0	1.5	1.0	4.8	6.4		1/8	6
11.0	13.5		8.0	8.0		6.5	16.0	1.0	1.5	1.0	4.8	6.4		1/4	8
13.5	15.5		8.0	11.0		6.5	17.5	1.5	3.0	1.5	4.8	6.4		3/8	10
15.5	19.0	25.5	11.0	12.5	15.5	9.5	22.5	1.5	3.5	1.5	6.4	7.9	11.2	1/2	15
19.0	22.5	28.5	13.0	14.0	19.0	9.5	24.0	1.5	3.5	1.5	6.4	7.9	12.7	3/4	20
22.5	27.0	32.0	14.0	17.5	20.5	12.5	28.5	2.0	2.0	2.0	9.6	11.2	14.2	1	25
27.0	32.0	35.0	17.5	20.5	22.5	12.5	30.0	2.0	4.0	2.0	9.6	11.2	14.2	1-1/4	32
32.0	38.0	38.0	20.5	25.5	25.5	12.5	32.0	2.0	4.0	2.0	11.2	12.7	15.7	1-1/2	40
38.0	41.0	54.0	25.5	28.5	28.5	19.0	41.0	2.0	4.0	2.0	12.7	15.7	19.0	2	50
41.0			28.5			19.0	43.0	2.5	5.0	2.5	15.7	19.0		2-1/2	65
57.0			32.0			19.0	44.5	2.5	5.0	2.5	19.0	22.4		3	80
66.5			41.0			19.0	48.0	2.5	5.0	2.5	22.4	28.4		4	100

NOTES :

(1) Average of Socket Wall Thickness around periphery shall be no less than listed values.
The minimum values are permitted in localized areas.

(2) Upper and lower values for each size are the respective maximum and minimum dimensions.

(3) DIMENSIONAL TOLERANCES: see page 8

注 :

(1) 承插口沿周边的平均厚度不小于列表位元, 局部允许达最小值

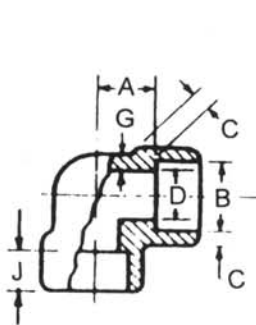
(2) 每个规格的较大值和较小值分别对应于最大直径和最小直径

(3) 尺寸公差: 参见第 8 页

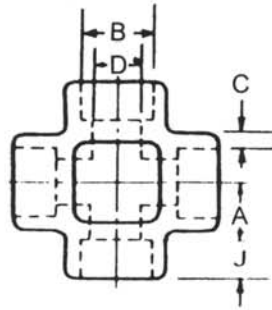


承插焊管配件 SOCKET-WELDING FITTINGS

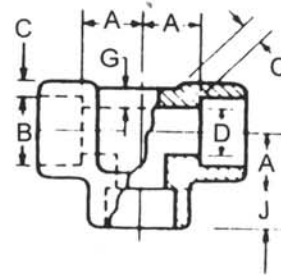
国际 GB/T14383-93



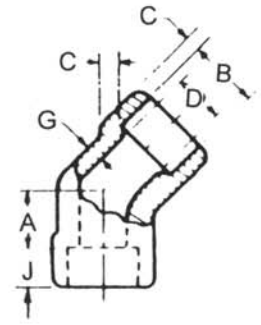
90° ELBOW
90° 弯头



CROSS
四通



TEE
三通



45° ELBOW
45° 弯头

单位尺寸为毫米 *Dimensions in Millimeters.*

公称管子规格		插口孔径 Socket Bore Dia. (2) B	管件孔径 Bore Diameter of Fittings(2) D		承插口深度 Socket Wall Thickness(1) C		本体壁厚 Body Wall Thickness G		插口深度 Depth of Socket Min. J
DN	Nom. Pipe Size		级别代号 Class Designation		级别代号 Class Designation		级别代号 Class Designation		
			Sch80	Sch160	Sch80 (Min)	Sch160 (Min)	Sch80 (Min)	Sch160 (min)	
15	1/2	21.8	14.1	12.3	4.5	5.6	4.0	5.0	10
20	3/4	27.4	18.9	15.7	5.0	7.0	4.4	6.2	13
25	1	34.2	24.7	21.1	5.6	7.9	5.0	6.9	13
32	1-1/4	42.9	32.4	29.8	6.3	7.9	5.5	6.9	13
40	1-1/2	48.8	38.3	34.1	6.3	8.9	5.5	7.8	13
50	2	61.1	49.1	42.7	7.0	11.0	6.2	9.7	16
65	2-1/2	76.9	61.9	56.1	8.9	12.5	7.8	11.0	16
80	3	89.8	72.9	66.9	10.0	13.8	8.8	12.1	16

NOTES :

(1) Average of Socket Wall Thickness around periphery shall be no less than listed values.
The minimum values are permitted in localized areas.

(2) Upper and lower values for each size are the respective maximum and minimum dimensions.

(3) DIMENSIONAL TOLERANCES: see page 8

注：

(1) 承插口沿周边的平均厚度不小于列表位元，局部允许达最小值

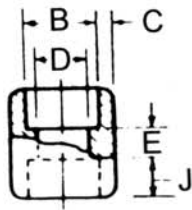
(2) 每个规格的较大值和较小值分别对应于最大直径和最小直径

(3) 尺寸公差：参见第8页

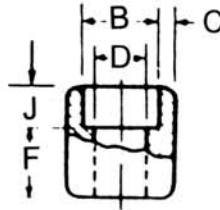


承插焊管配件 SOCKET-WELDING FITTINGS

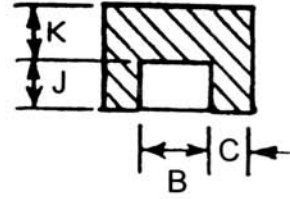
国际 GB/T14383-93



COUPLING
双承口管箍



HALF COUPLING
单承口管箍



CAP
管帽

单位尺寸为毫米 *Dimensions in Millimeters.*

中心到承插口底 <i>Center to Bottom of Socket-A</i>				长度 <i>Laying Lengths</i>		公差 <i>Tolerances ±</i>			端壁厚度 <i>End Wall Thickness K (Min).</i>		公称管子规格	
90° 弯头, 三通, 四通 <i>90° Elbows Tees, Crosses</i>		45° 弯头 <i>45° Elbows</i>		双承口管箍 <i>Couplings</i>	单承口管箍 <i>Half Couplings</i>	A	E	F	级别代号 <i>Class Designation</i>		Nom. Pipe Size	DN
级别代号 <i>Class Designation</i>		级别代号 <i>Class Designation</i>							Sch80	Sch160		
Sch80	Sch160	Sch80	Sch160	E	F				Sch80	Sch160		
16	19	11	13	10	22.5	1.5	3.0	1.5	6.5	7.5	1/2	15
19	22	13	14	10	23.5	1.5	3.0	1.5	7.0	9.0	3/4	20
22	27	14	18	13	29.0	2.0	4.0	2.0	8.5	11.0	1	25
27	32	18	21	13	30.0	2.0	4.0	2.0	10.0	12.0	1-1/4	32
32	38	21	25	13	32.0	2.0	4.0	2.0	11.0	13.5	1-1/2	40
38	41	25	29	19	41.0	2.0	4.0	2.0	12.5	16.5	2	50
41	57	29	32	19	42.5	2.5	5.0	2.5	15.5	19.5	2-1/2	65
57	64	32	35	19	44.5	2.5	5.0	2.5	17.5	23.0	3	80

焊接管件插口尺寸公差

DIMENSIONAL TOLERANC OF FORGED SOCKET WELDING FITTING

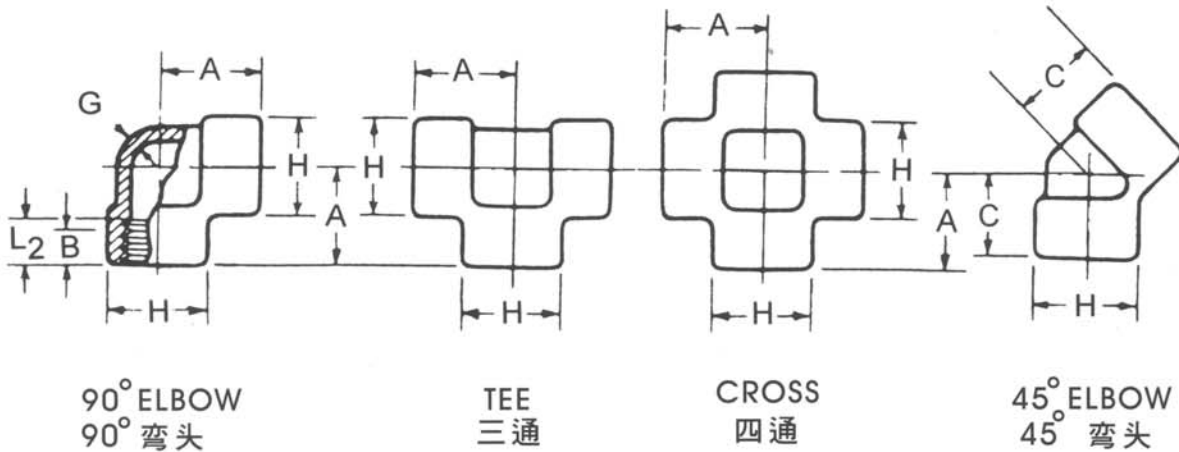
单位尺寸为毫米 *Dimensions in Millimeters.*

项目 <i>Item</i>	Type of pipe fitting	ND	6 to 8	10 to 20	25 to 50	65 to 100
		NPS	1/8 to 1/4	3/8 to 3/4	1 to 2	2-1/2 to 4
Bore diameter of socket (B) 承口直径	所有管件型号 All types of pipe fittings	+0.3 -0				+0.4 -0
Bore diameter of fitting (D) 插口直径		±0.4				±0.8
Centricity of bore (X) 同心度		±0.8				
Coin cadence of axes (Y) 轴线重合度		1.5/300 Max				
Center to bottom of socket(A)	45,90D Elbow, Tee	±0.8	±1.5	±2	±2.5	
Bottom to bottom of socket(E)	Full coupling 全内接头	±1.5	±3	±4	±5	
Bottom of socket to opposite face(F)	Half coupling 半内接头	±0.8	±1.5	±2	±2.5	



螺纹管配件 THREADED FITTINGS

ASME B16.11-2005(ASME B16.11-2001的修订版)



90° ELBOW
90° 弯头

TEE
三通

CROSS
四通

45° ELBOW
45° 弯头

单位尺寸为毫米 Dimensions in Millimeters.

公称管子规格		弯头, 三通, 四通 中心到端 Center to End			45° 弯头中心到端 Center to End			箍圈外径 Outside Diameter			最小壁厚 Minimum Wall			螺纹长度 Length of	
DN	Nom. Pipe Size	Elbows, Tees, Cross			45° Elbow			of Band			Thickness			Thread	
		A			C			H			G			Min.(1)	
		2000	3000	6000	2000	3000	6000	2000	3000	6000	2000	3000	6000	B	L2
6	1/8	21	21	25	17	17	19	22	22	25	3.18	3.18	6.35	6.4	6.7
8	1/4	21	25	28	17	19	22	22	25	33	3.18	3.30	6.60	8.1	10.2
10	3/8	25	28	33	19	22	25	25	33	38	3.18	3.51	6.98	9.1	10.4
15	1/2	28	33	38	22	25	28	33	38	46	3.18	4.09	8.15	10.9	13.6
20	3/4	33	38	44	25	28	33	38	46	56	3.18	4.32	8.53	12.7	13.9
25	1	38	44	51	28	33	35	46	56	62	3.68	4.98	9.93	14.7	17.3
32	1-1/4	44	51	60	33	35	43	56	62	75	3.89	5.28	10.59	17.0	18.0
40	1-1/2	51	60	64	35	43	44	62	75	84	4.01	5.56	11.07	17.8	18.4
50	2	60	64	83	43	44	52	75	84	102	4.27	7.14	12.09	19.0	19.2
65	2-1/2	76	83	95	52	52	64	92	102	121	5.61	7.65	15.29	23.6	28.9
80	3	86	95	106	64	64	79	109	121	146	5.99	8.84	16.64	25.9	30.5
100	4	106	114	114	79	79	79	146	152	152	6.55	11.18	18.67	27.7	33.0

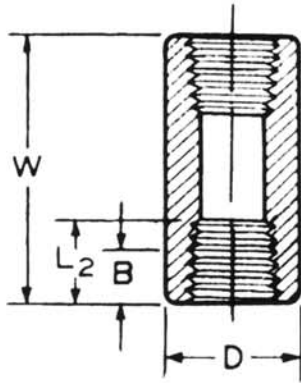
(1) Dimension B is minimum length of perfect thread. The length of useful thread (B plus threads with fully formed roots and flat crests) shall not be less than L2 (effective length of external thread) required by American National Standard for Pipe Threads(ANSI/ASME B1.20.1)

(1) 尺寸 B 为完整螺纹的最小长度, 根据美国国家标准对管螺纹的要求 (ANSI/ASME B1.20.1) 有效螺纹长度 B 加上具有充分形成的牙底和平牙顶的牙数应不小于 L2(外螺纹牙的有效长度)。

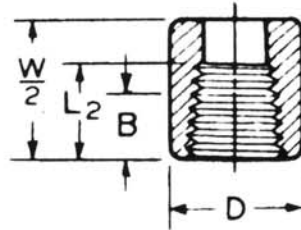


螺纹管配件 THREADED FITTINGS

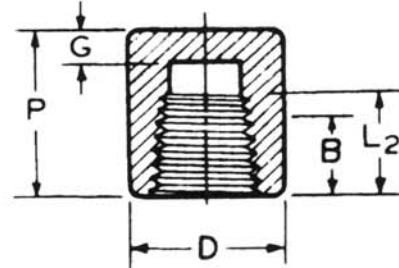
ASME B16.11-2005(ASME B16.11-2001的修订版)



COUPLING
双承口管箍



HALF COUPLING
单承口管箍



CAP
管帽

尺寸单位为毫米 Dimensions in Millimeters.

公称管子规格 DN	Nom. Pipe Size	螺纹外接头端到端 End to End Couplings W		管帽端到端 End to End Caps P		外径 Outside Diameter D		端部壁厚 End Wall Thickness G (Min.)		螺纹长度 Length of Thread. (Min.)(1)	
		3000 & 6000	3000	6000	3000	6000	3000	6000	3000	6000	B
6	1/8	32	19	...	16	22	4.8	...	6.4	6.7	
8	1/4	35	25	27	19	25	4.8	6.4	8.1	10.2	
10	3/8	38	25	27	22	32	4.8	6.4	9.1	10.4	
15	1/2	48	32	33	28	38	6.4	7.9	10.9	13.6	
20	3/4	51	37	38	35	44	6.4	7.9	12.7	13.9	
25	1	60	41	43	44	57	9.7	11.2	14.7	17.3	
32	1-1/4	67	44	46	57	64	9.7	11.2	17.0	18.0	
40	1-1/2	79	44	48	64	76	11.2	12.7	17.8	18.4	
50	2	86	48	51	76	92	12.7	15.7	19.0	19.2	
65	2-1/2	92	60	64	92	108	15.7	19.0	23.6	28.9	
80	3	108	65	68	108	127	19.0	22.4	25.9	30.5	
100	4	121	68	75	140	159	22.4	28.4	27.7	33.0	

(1) Dimension B is minimum length of perfect thread. The length of useful thread (B plus threads with fully formed roots and flat crests) shall not be less than L2 (effective length of external thread) required by American National Standard for Pipe Threads(ANSI/ASME B1.20.1)

(2) Class 2000 and NPS 1/8 class 6000 couplings, half couplings, and caps are not included in this standard.

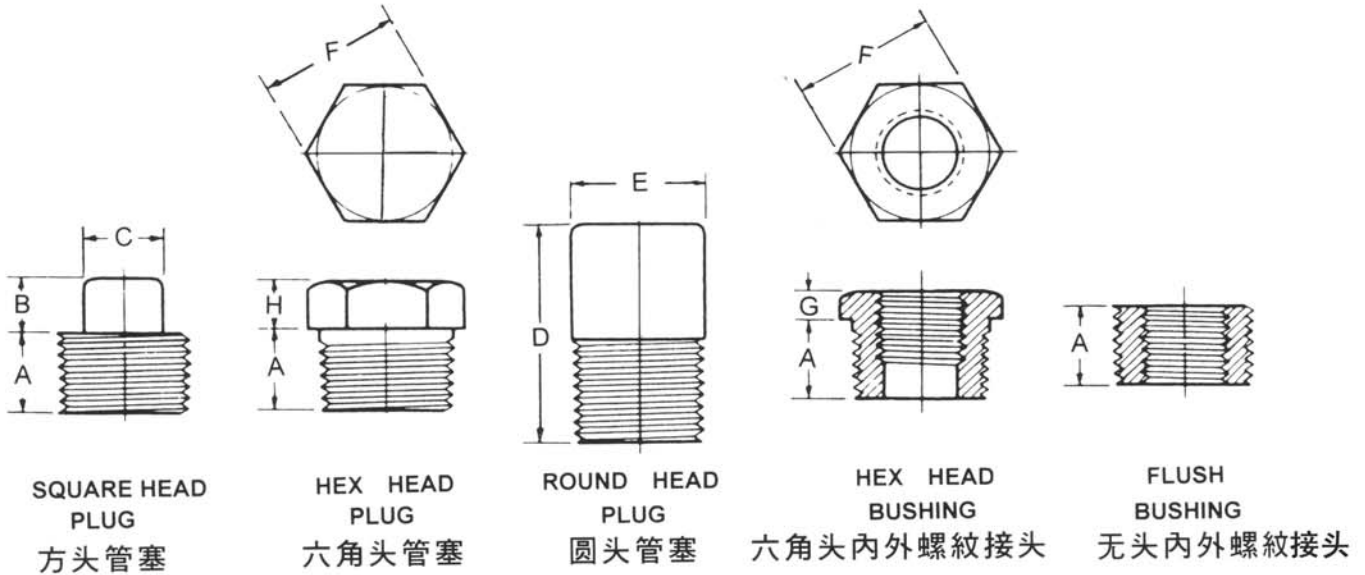
(1) 尺寸 B 为完整螺纹的最小长度，根据美国国家标准对管螺牙的要求 (ANSI/ASME B1.20.1) 有效螺纹长度 B 加上具有充分形成的牙底和平牙顶的牙数应不小于 L2 (外螺纹牙的有效长度)。

(2) 本标准不包括 2000 磅级和 NPS 1/8 6000 磅级双承口管箍，单承口管箍和管帽。



螺纹管配件 THREADED FITTINGS

ASME B16.11-2005(ASME B16.11-2001的修订版)



尺寸单位为毫米 *Dimensions in Millimeters.*

公称管子规格		长度 Length (Min.) A	Plugs Square Head		Plugs Round Head	Hex Plugs & Bushings			
DN	Nom. Pipe Size		方头高度 Height of Square (Min.) B	对边距离 Width Flats (Min.) C	圆头公称直径 Nominal Diameter of Head E	长度 Length (Min.) D	对边距离 Width Flats (Nom) F	Hex Height (Min.)	
								内外螺纹 Bushing G	管塞 Plug H
6	1/8	10	6	7	10	35	11	...	6
8	1/4	11	6	10	14	41	16	3	6
10	3/8	13	8	11	18	41	18	4	8
15	1/2	14	10	14	21	44	22	5	8
20	3/4	16	11	16	27	44	27	6	10
25	1	19	13	21	33	51	36	6	10
32	1-1/4	21	14	24	43	51	46	7	14
40	1-1/2	21	16	28	48	51	50	8	16
50	2	22	18	32	60	64	65	9	18
65	2-1/2	27	19	36	73	70	75	10	19
80	3	28	21	41	89	70	90	10	21
100	4	32	25	65	114	76	115	13	25

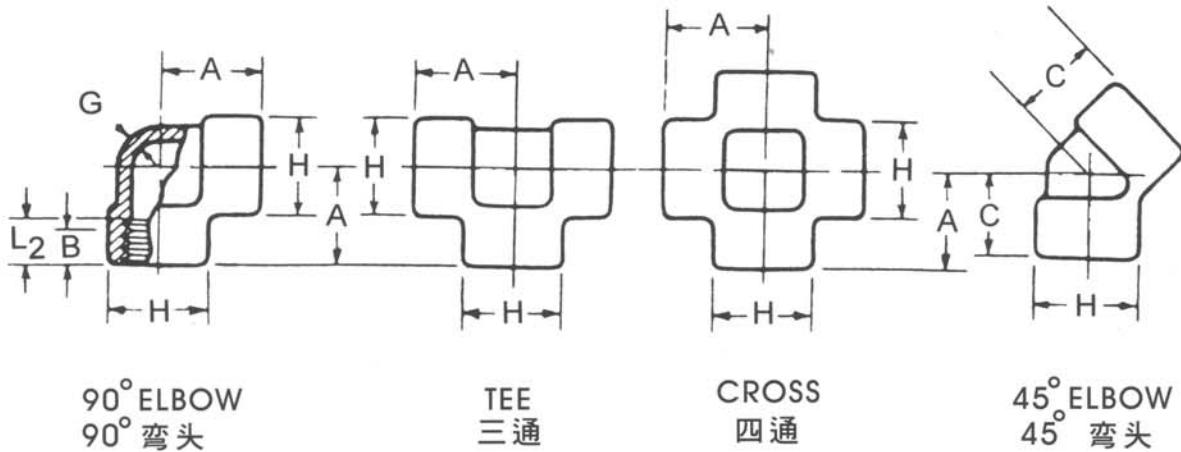
(1) CAUTIONARY NOTE REGARDING HEX BUSHINGS. Hex Head Bushings of one-size reduction should not be used in services where they might be subject to harmful loads and forces other than internal pressures

(1) 使用六角头内外螺纹接头特别注意：六角头丝套使用不宜减少任一尺寸，因为这些丝套可能承受压外的有害负荷力



螺纹管配件 THREADED FITTINGS

国标 GB/T 14626-93



90° ELBOW
90° 弯头

TEE
三通

CROSS
四通

45° ELBOW
45° 弯头

尺寸单位为毫米 Dimensions in Millimeters.

公称管子规格		弯头, 三通, 四通 中心到端 Center to End			45° 弯头中心到端 Center to End			端部外径 Outside Diameter			最小壁厚 Minimum Wall			螺纹长度 Length of	
DN	Nom. Pipe Size	Elbows, Tees, Cross			45° Elbow			of Band			Thickness			Thread	
		A			C			H			G			L2 (Min.)	
		Sch80	Sch160	XXS	Sch80	Sch160	XXS	Sch80	Sch160	XXS	Sch80	Sch160	XXS	60°螺纹	55°螺纹
8	1/4	21	25	29	17	19	22	22	25	33	3.0	3.5	6.5	10.0	9.7
10	3/8	25	29	33	19	22	25	25	33	38	3.0	3.5	7.0	10.5	10.1
15	1/2	29	33	38	22	25	29	33	38	46	3.0	4.0	8.0	13.5	13.2
20	3/4	33	38	44	25	29	33	38	46	56	3.0	4.5	8.5	14.0	14.5
25	1	38	44	51	29	33	35	46	56	62	3.5	5.0	10.0	17.5	16.8
32	1-1/4	44	51	60	33	35	43	56	62	75	4.0	5.5	10.5	18.0	19.1
40	1-1/2	51	60	64	35	43	44	62	75	84	4.0	5.5	11.0	18.5	19.1
50	2	60	64	83	43	45	52	75	84	102	4.5	7.0	12.0	19.0	23.4
65	2-1/2	76	83	95	52	52	64	92	102	121	5.5	7.5	15.5	29.0	26.7
80	3	86	95	106	64	64	79	110	121	146	6.0	9.0	16.5	30.5	29.8
100	4	106	114	114	79	79	79	146	152	152	6.5	11.0	18.5	33.0	35.8

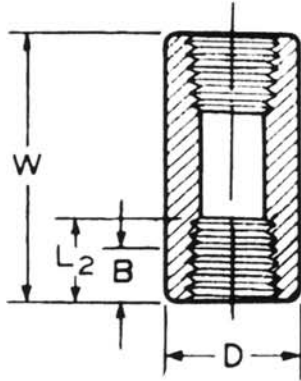
(1) Dimension B is minimum length of perfect thread. The length of useful thread B plus threads with fully formed roots and flat crests shall not be less than L2

(1) 尺寸 B 为完整螺纹的最小长度, 根据国家标准对管螺纹的要求有用螺纹长度 B 加上具有充分形成的牙底和平牙顶的牙数应不小于 L2(外螺纹牙的有效长度)。

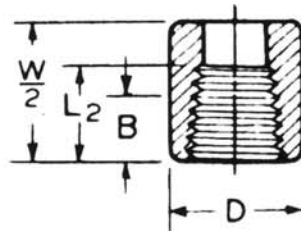


螺纹管配件 THREADED FITTINGS

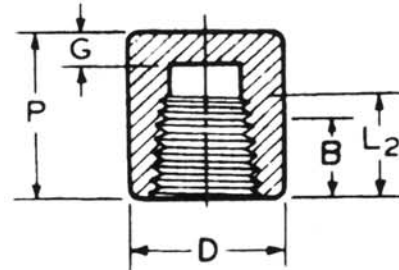
国标 GB/T 14626-93



COUPLING
双承口管箍



HALF COUPLING
单承口管箍



CAP
管帽

尺寸单位为毫米 *Dimensions in Millimeters.*

公称管子规格		螺纹外接头端到端 End to End Couplings W	管帽端到端 End to End Caps P		外径 Outside Diameter D		端部壁厚 End Wall Thickness G (Min)		螺纹长度 Length of Thread L2 (Min.)(1)	
DN	Nom. Pipe Size		Sch160 & XXS	Sch160	XXS	Sch160	XXS	Sch160	XXS	60°螺纹
8	1/4	35	25	27	19	25	5.0	6.5	10.0	9.7
10	3/8	38	25	27	22	32	5.0	6.5	10.5	10.1
15	1/2	48	32	33	29	38	6.5	8.0	13.5	13.2
20	3/4	51	37	38	35	44	6.5	8.0	14.0	14.5
25	1	60	41	43	44	57	9.5	11.0	17.5	16.8
32	1-1/4	67	44	46	57	64	9.5	11.0	18.0	19.1
40	1-1/2	79	44	48	64	76	11.0	12.5	18.5	19.1
50	2	86	48	51	76	92	12.5	16.0	19.0	23.4
65	2-1/2	92	60	64	92	108	16.0	19.0	29.0	26.7
80	3	108	65	68	108	127	19.0	22.0	30.5	29.8
100	4	121	68	75	140	159	22.0	28.5	33.0	35.8

(1) Dimension B is minimum length of perfect thread. The length of useful thread B plus threads with fully formed roots and flat crests shall not be less than L2

(2) Class 2000 and NPS 1/8 class 6000 couplings, half couplings, and caps are not included in this standard.

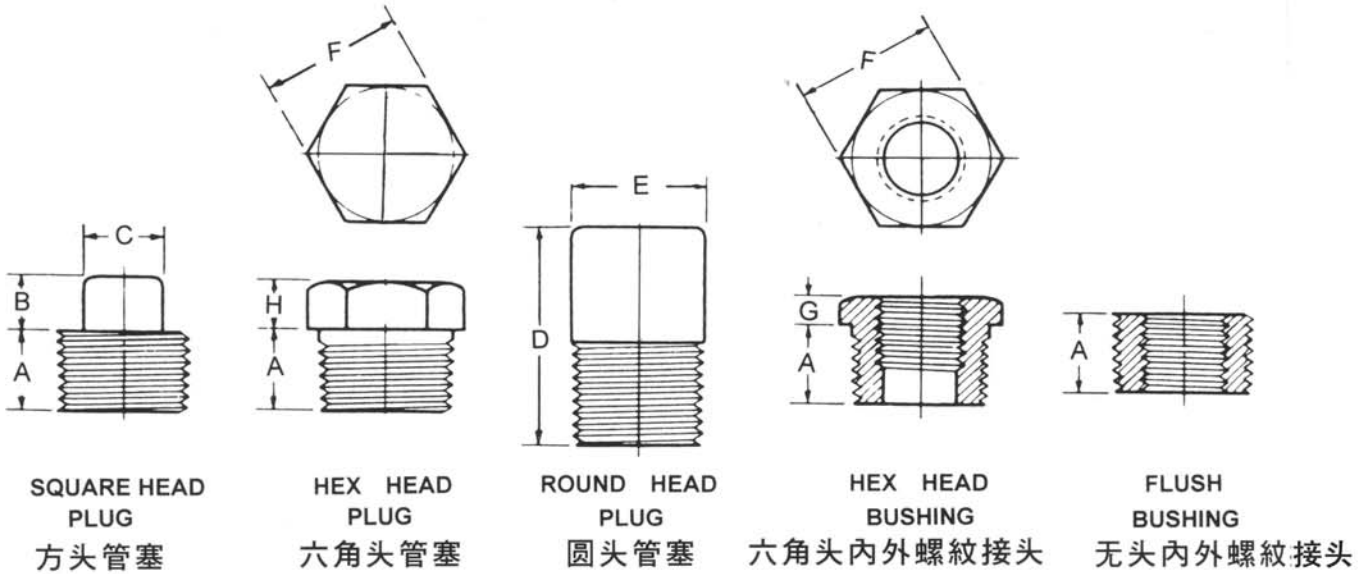
(1) 尺寸 B 为完整螺纹的最小长度，根据国家标准对管螺牙的要求有用螺纹长度 B 加上具有充分形成的牙底和平牙顶的牙数应不小于 L2(外螺纹牙的有效长度)。

(2) 本标准不包括 2000 磅级和 NPS 1/8 6000 磅级双承口管箍，单承口管箍和管帽。



螺纹管配件 THREADED FITTINGS

国标 GB/T14626-93



尺寸单位为毫米 *Dimensions in Millimeters.*

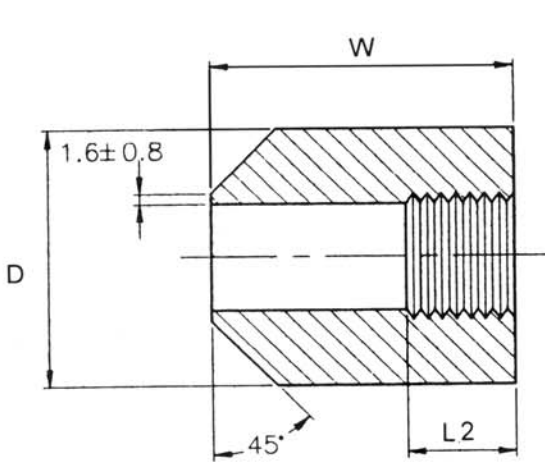
公称管子规格		长度 Length (Min.) A	Plugs Square Head		Plugs Round Head	Hex Plugs & Bushings			
DN	Nom. Pipe Size		方头高度 Height of Square (Min.) B	对边距离 Width Flats (Min.) C	圆头公称直径 Nominal Diameter of Head E	长度 Length (Min.) D	对边距离 Width Flats (Nom) F	Hex Height (Min.)	
								内外螺纹 Bushing G	管塞 Plug H
8	1/4	11.0	6	9.5	13	41	16.0	3	6
10	3/8	12.5	8	11.0	17	41	17.5	4	8
15	1/2	14.5	10	14.5	21	44	22.0	5	8
20	3/4	16.0	11	16.0	27	44	27.0	6	10
25	1	19.0	13	20.5	33	51	35.0	6	10
32	1-1/4	20.5	14	24.0	43	51	44.5	7	14
40	1-1/2	20.5	16	28.5	48	51	51.0	8	16
50	2	22.0	17	33.5	60	64	63.5	9	17
65	2-1/2	27.0	19	38.0	73	70	76.0	10	19
80	3	28.5	21	43.0	89	70	89.0	10	21
100	4	32.0	25	63.5	114	76	117.5	13	25

(1) CAUTIONARY NOTE REGARDING HEX BUSHINGS. Hex Head Bushings of one-size reduction should not be used in services where they might be subject to harmful loads and forces other than internal pressures

(1) 使用六角头内外螺纹接头特别注意：六角头丝套使用不宜减少任一尺寸，因为这些丝套可能承受压外的有害负荷力



承插焊单接口管箍 BOSSSES



THREADED
螺紋

尺寸单位为毫米 *Dimensions in Millimeters.*

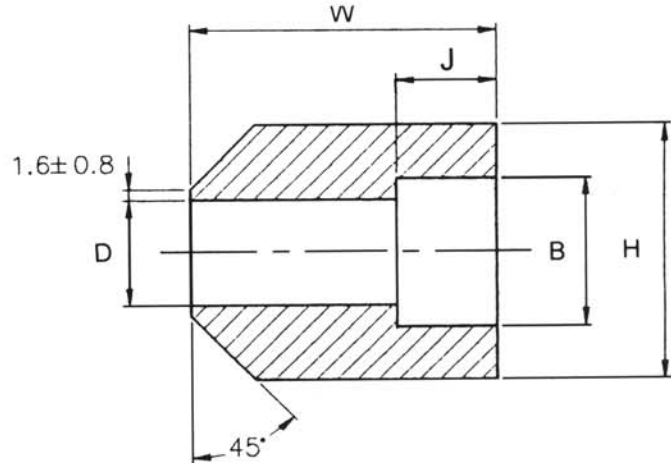
Size (in)	D	W	L2 (Min)
-----------	---	---	----------

3000Lbs

1/4	22.1	39.9	10.0
3/8	25.9	50.0	10.5
1/2	34.0	50.0	13.5
3/4	39.1	50.0	14.0
1	48.0	50.0	17.5
1-1/4	59.9	50.0	18.0
1-1/2	65.0	50.0	18.5
2	80.0	59.9	19.0

6000Lbs

1/4	25.9	39.9	10.0
3/8	36.0	50.0	10.5
1/2	43.9	50.0	13.5
3/4	50.0	50.0	14.0
1	59.9	50.0	17.5
1-1/4	65.0	50.0	18.0
1-1/2	80.0	50.0	18.5
2	95.0	59.0	19.0



SOCKET-WELDING
承插焊接

尺寸单位为毫米 *Dimensions in Millimeters.*

Size (in)	B	D	J (Min)	W	H
-----------	---	---	---------	---	---

3000Lbs

1/4	14.3	9.3	9.9	39.9	22.3
3/8	17.7	12.6	10.9	50.0	26.5
1/2	21.9	15.8	13.0	50.0	34.2
3/4	27.3	21.0	14.0	50.0	39.5
1	34.0	26.7	16.0	50.0	46.3
1-1/4	42.8	35.1	18.0	50.0	55.2
1-1/2	48.9	40.9	19.1	50.0	65.1
2	61.4	52.5	22.1	59.9	80.2

6000Lbs

1/2	21.9	11.8	14.0	50.0	43.3
3/4	27.3	15.6	16.0	50.0	49.1
1	34.0	20.7	18.0	50.0	56.0
1-1/4	42.8	29.5	19.1	50.0	65.2
1-1/2	48.9	34.0	22.0	50.0	80.1
2	61.4	42.9	25.9	59.9	95.1

(1) Thread in Accordance with GB/T12716, GB7306, ASME B1.20.1

(2) Socket Dimensions in Accordance with ASME B16.11

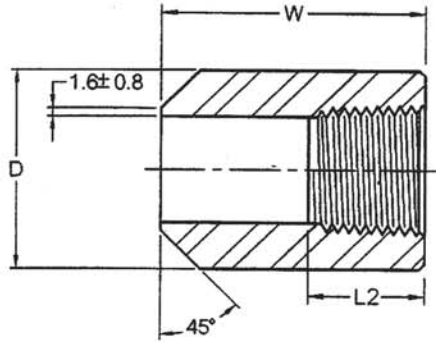
(1) 螺紋按 GB/T12716, GB7306, ASME B1.20.1 制造

(2) 承插焊口接 ASME B16.11 尺寸执行。



承插焊单接口管箍 BOSSSES

BS3799-1974



Dimensions in Millimeters.

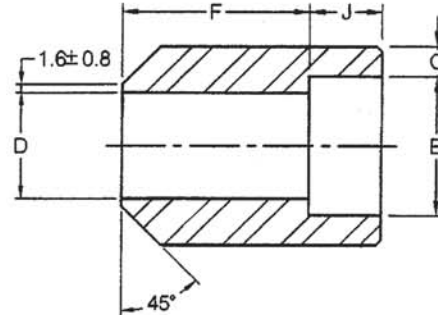
Size (in)	D	W	L2 (Min)
-----------	---	---	----------

3000 Lbs

1/8	16.0	38.0	6.70
1/4	19.0	41.0	10.21
3/8	22.0	45.0	10.36
1/2	29.0	51.0	13.56
3/4	35.0	51.0	13.86
1	45.0	51.0	17.34
1-1/2	64.0	51.0	18.38
2	76.0	51.0	19.22
2-1/2	95.0	51.0	28.89
3	110.0	57.0	30.48
4	140.0	64.0	33.02

6000 Lbs

1/8	22.0	38.0	6.70
1/4	26.0	41.0	10.21
3/8	32.0	45.0	10.36
1/2	38.0	51.0	13.56
3/4	45.0	51.0	13.86
1	60.0	51.0	17.34
1-1/2	76.0	51.0	18.38
2	95.0	51.0	19.22



Dimensions in Millimeters.

Size (in)	B	D	J (Min)	F	C
-----------	---	---	---------	---	---

3000 Lbs*

1/8	10.7	6.8	10.0	28.0	3.2
1/4	14.1	9.2	10.0	32.0	3.3
3/8	17.6	12.5	11.0	34.0	3.5
1/2	21.8	15.5	13.0	38.0	4.1
3/4	27.4	21.0	13.0	38.0	4.3
1	34.1	26.5	16.0	35.0	5.0
1-1/2	49.0	40.5	19.0	32.0	5.6
2	61.0	52.0	22.0	29.0	6.1
2-1/2	73.8	52.0	22.0	29.0	7.7
3	89.7	78.0	22.0	29.0	8.3

6000 Lbs

1/2	21.8	11.8	13.0	38.0	5.2
3/4	27.4	15.5	13.0	38.0	6.1
1	34.1	20.7	16.0	35.0	7.0
1-1/2	49.0	34.0	19.0	32.0	7.8
2	61.0	43.0	22.0	29.0	9.5
2-1/2	73.8	54.0	22.0	29.0	10.4
3	89.7	66.0	22.0	29.0	12.2

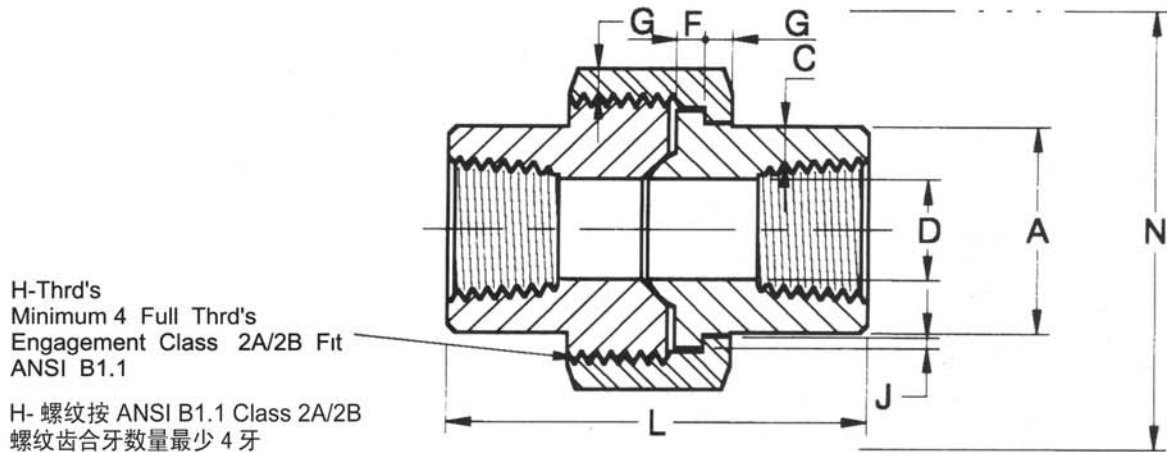
(1) Thread in Accordance with ASME B1.20.1

(1) 牙口依据 ASME B1.20.1



活接头 UNIONS

螺纹活接 MSS-SP-83-2001
THREADED END MSS-SP-83-2001



单位尺寸为毫米 *Dimensions in Millimeters.*

公称管子 规格 Nom Pipe Size	管端 Pipe Ene (Min.) A	壁厚 Wall (Min.) C	流通孔直径 Water Way Bore D	凸缘 Male Flange Min F	螺母 Nut Min G	牙数 /inch Thrds. Per Inch Max. H	支承 Bearing Min J	公称装配长度 Length Assem Nom L	螺母装备 Clear Assem. Nut N
1/8	14.7	2.41	8.43 6.43	3.18	3.18	16	1.24	41.4	50.8
1/4	19.0	3.02	11.13 9.45	3.18	3.18	16	1.24	41.4	50.8
3/8	22.9	3.20	14.27 13.51	3.43	3.43	14	1.37	46.0	55.9
1/2	27.7	3.73	17.86 17.07	3.68	3.68	14	1.50	49.0	58.4
3/4	33.5	3.91	23.01 21.39	4.06	4.06	11	1.68	56.9	66.0
1	41.4	4.55	28.98 27.74	4.57	4.45	11	1.85	62.0	78.7
1-1/4	50.5	4.85	37.69 35.36	5.33	5.21	11	2.13	71.1	94.0
1-1/2	57.2	5.08	43.54 41.20	5.84	5.59	10	2.31	76.5	111.8
2	70.1	5.54	55.58 52.12	6.60	6.35	10	2.69	86.1	132.1
2-1/2	85.3	7.01	66.27 64.31	7.49	7.11	8	3.07	102.4	149.9
3	102.4	7.62	86.25 77.27	8.26	8.00	8	3.53	109.0	175.3



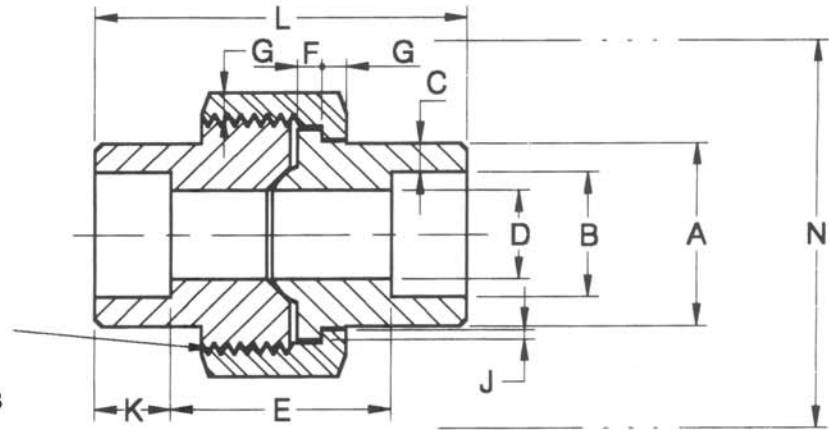
活接头 UNIONS

螺纹活接 MSS-SP-83-2001

SCOKET WELD END MSS-SP-83-2001

H-Thrd's
Minimum 4 Full Thrd's
Engagement Class 2A/2B Fit
ANSI B1.1

H- 螺纹按 ANSI B1.1 Class 2A/2B
螺纹齿合牙数量最少 4 牙



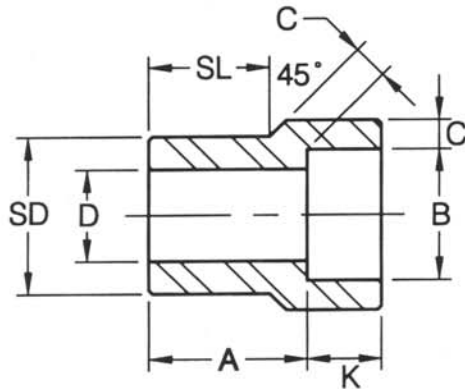
尺寸单位为毫米 *Dimensions in Millimeters.*

公称管子 规格 Nom Pipe Size	管端 Pipe End Min A	承口内径 Socket Bore Dia B	承口壁厚 Socket Wall (Min.) C	流通孔直径 Water Way Bore D	长度 Laying Length E	凸缘 Male Flange Min F	螺帽 Nut Min G	牙数 /inch Thrds. Per Inch Max. H	支承 Beaning Min J	插口深度 Depth of Socket (Min) K	公称装备长度 Length Assem Nom L	螺母装备 Clear Assem. Nut N
1/8	21.8	11.18 10.67	3.18	7.59 6.07	22.4 19.1	3.18	3.18	16	1.24	9.7	41.4	50.8
1/4	21.8	14.61 14.10	3.30	10.01 8.48	22.4 19.1	3.18	3.18	16	1.24	9.7	41.4	50.8
3/8	25.9	18.03 17.53	3.51	13.28 11.76	26.9 20.6	3.43	3.43	14	1.37	9.7	46.0	55.9
1/2	31.2	22.23 21.73	4.09	16.56 15.04	26.9 20.6	3.68	3.68	14	1.50	9.7	49.0	58.4
3/4	37.1	27.56 27.05	4.27	21.69 20.17	31.8 25.4	4.06	4.06	11	1.68	12.7	56.9	66.0
1	45.5	34.29 33.78	4.98	27.41 25.88	34.3 26.2	4.57	4.45	11	1.85	12.7	62.0	78.7
1-1/4	54.9	43.05 42.55	5.28	35.81 34.29	40.6 32.5	5.33	5.21	11	2.13	12.7	71.1	94.0
1-1/2	61.5	49.15 48.64	5.54	41.66 40.13	42.2 34.0	5.84	5.59	10	2.31	12.7	76.5	111.8
2	75.2	61.62 61.11	6.05	53.26 51.74	45.5 37.3	6.60	6.35	10	2.69	15.7	86.1	132.1
2-1/2	91.7	74.45 73.81	7.67	64.24 61.19	61.7 52.1	7.49	7.11	8	3.07	15.7	102.4	149.9
3	109.2	90.42 89.79	8.31	79.45 76.40	63.8 53.6	8.26	8.00	8	3.53	15.7	109.0	175.3

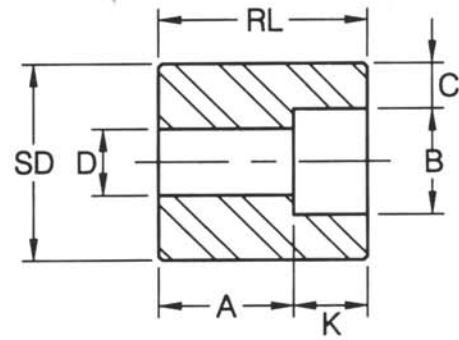


承插焊渐缩式插接头 REDUCER INSERTS SOCKET WELDING

MSS-SP-79-2004



TYPE 1
1型



TYPE 2⁽¹⁾
2型

单位尺寸为毫米 Dimensions in Millimeters.

公称管子 规格 Nom Pipe Size	类别 Type(1)		承口 Socket		末端直径 Shank Dia. SD	覆盖长度 Laying Length A		孔 Bore D		壁厚 Wall(Min.) C		长度 Length			
			直径 Dia B	深度 Depth Min. K				3M	6M	3M	6M	3M	6M	SL	
	3M	6M				3M	6M	3M	6M	3M	6M	3M	6M	3M	6M
3/8x1/4	1	1	14.35	10	17.15	19	21	9.0	6.5	3.78	4.60	14	16		
1/2x3/8	1	1	17.78	10	21.34	21	23	12.5	9.0	4.01	5.03	16	16		
1/2x1/4	1	1	14.35	10	21.34	21	21	9.0	6.5	3.78	4.60	16	16		
3/4x1/2	1	1	21.97	10	26.67	22	25	16.0	11.5	4.67	5.97	17	19		
3/4x3/8	2	1	17.78	10	26.67	16	22	12.5	9.0	4.01	5.03		19	27	
3/4x1/4	2	2	14.35	10	26.67	18	22	9.0	6.5	3.78	4.60			27	32
1x3/4	1	1	27.31	13	33.40	24	28	21.0	15.5	4.90	6.96	19	21		
1x1/2	2	1	21.97	10	33.40	16	28	16.0	11.5	4.67	5.97		21	28	
1x3/8	2	2	17.78	10	33.40	18	22	12.5	9.0	4.01	5.03			28	33
1x1/4	2	2	14.35	10	33.40	19	24	9.0	6.5	3.78	4.60			28	33
1-1/4x1	1	1	34.04	13	42.16	25	30	26.5	20.5	5.69	7.92	21	22		
1-1/4x3/4	2	2	27.31	13	42.16	18	21	21.0	15.5	4.90	6.96			32	35
1-1/4x1/2	2	2	21.97	10	42.16	19	22	16.0	11.5	4.67	5.97			32	35
1-1/4x3/8	2	2	17.78	10	42.16	21	24	12.5	9.0	4.01	5.03			32	35
1-1/4x1/4	2	2	14.35	10	42.16	22	25	9.0	6.5	3.78	4.60			32	35
1-1/2x1-1/4	1	1	42.80	13	48.26	28	35	35.0	29.5	6.07	7.92	22	25		
1-1/2x1	2	1	34.04	13	48.26	18	29	26.5	20.5	5.69	7.92		25	33	
1-1/2x3/4	2	2	27.31	13	48.26	19	25	21.0	15.5	4.90	6.96			33	40
1-1/2x1/2	2	2	21.97	10	48.26	21	27	16.0	11.5	4.67	5.97			33	40
1-1/2x3/8	2	2	17.78	10	48.26	22	28	12.5	9.0	4.01	5.03			33	40
2x1-1/2	1	1	48.90	13	60.32	32	39	41.0	34.0	6.35	8.9	25	28		
2x1-1/4	2	2	42.80	13	60.32	21	24	35.0	29.5	6.07	7.92			38	41
2x1	2	2	34.04	13	60.32	22	25	26.5	21.0	5.69	7.92			38	41
2x3/4	2	2	27.31	13	60.32	24	27	21.0	15.5	4.90	6.96			38	41
2 x1/2	2	2	21.97	10	60.32	25	28	16.0	11.5	4.67	5.97			38	41

(1) At the option of the manufacturer Type 2 Reducers may be furnished in Type 1 configuration.

(2) 3M & 6M symbols denote 3000 and 6000 classes.

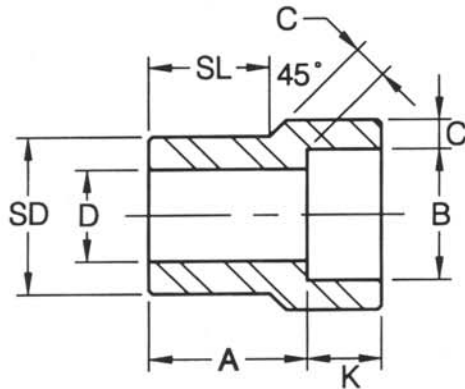
(1) 2型可以按1型配置供应，由制造商选择。

(2) 3M和6M符号表示3000磅和6000磅。

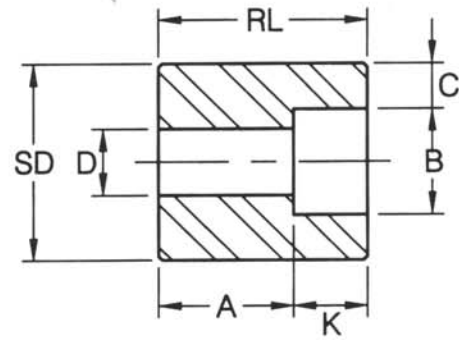


承插焊渐缩式插接头 REDUCER INSERTS SOCKET WELDING

MSS-SP-79-2004



TYPE 1
1型



TYPE 2⁽¹⁾
2型

(Continued)

单位尺寸为毫米 Dimensions in Millimeters.

公称管子 规格 Nom Pipe Size	类别 Type(2)		承口 Socket		末端直径 Shank Dia. SD	覆盖长度 Laying Length A		孔 Bore D		壁厚 Wall (Min.) C		长度 Length			
			直径 Dia. B	深度 Depth Min. K		3M	6M	3M	6M	3M	6M	3M	6M	3M	6M
	3M	6M									SL		RL (Min.)		
2-1/2x2	1	1	61.37	16	73.02	46	43	52.5	43.0	6.93	10.92	32	38		
2-1/2x1-1/2	2	2	48.90	13	73.02	35	35	41.0	34.0	6.35				54	54
2-1/2x1-1/4	2	2	42.80	13	73.02	37	37	35.0	29.5	6.07				54	54
2-1/2x1	2	2	34.04	13	73.02	38	38	26.5	21.0	5.69				54	54
2-1/2x3/4	2	2	27.31	13	73.02	40	38	21.0	15.5	4.90				54	54
3x2-1/2	1	1	74.07	16	88.90	38	57	62.5	54.0	8.76		32	45		
3x2	2	2	61.37	16	88.90	25	32	52.5	43.0	6.93				48	54
3x1-1/2	2	2	48.90	13	88.90	29	32	41.0	34.0	6.35				48	54
3x1-1/4	2	2	42.80	13	88.90	30	32	35.0	29.5	6.07				48	54
3x1	2	2	34.04	13	88.90	32	32	26.5	21.0	5.69				48	54
4x3	2		90.04	16	114.30	33		78.0		9.5				60	
4x2-1/2	2		74.07	16	114.30	38		62.5		8.76				60	
4x2	2		61.37	16	114.30	38		52.5		6.93				60	
4x1-1/2	2		48.90	13	114.30	42		41.0		6.35				60	
4x1-1/4	2		42.80	13	114.30	43		35.0		6.07				60	

(1) At the option of the manufacturer Type 2 Reducers may be furnished in Type 1 configuration.

(2) 3M & 6M symbols denote 3000 and 6000 classes.

(1) 2型可以按1型配置供应，由制造商选择。

(2) 3M和6M符号表示3000磅和6000磅。

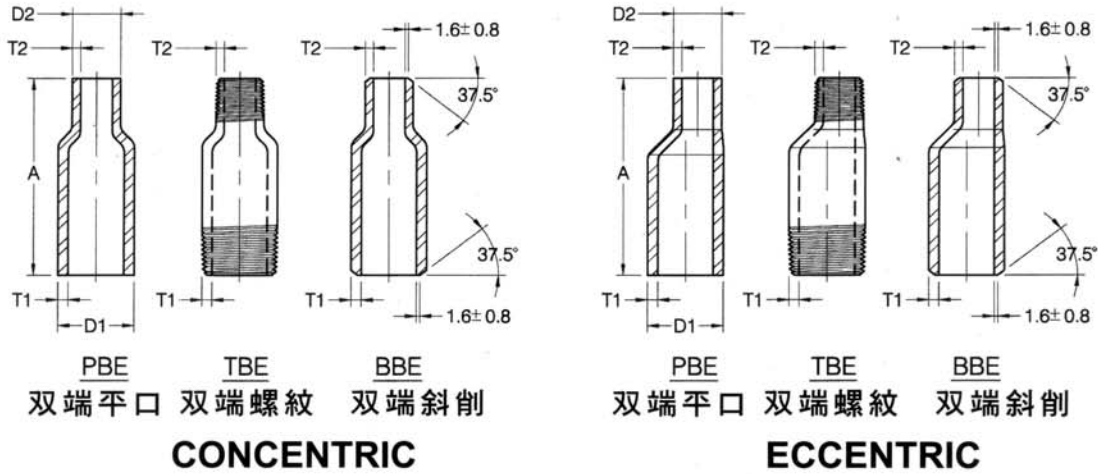
TOLERANCES

Laying Length A-	Sizes 3/8" thru 3/4"	+ 1.5mm/-0.0mm	Bore D	Sizes 1/4" thru 2"	± 0.8mm
	Sizes 1" thru 2"	+ 2.0mm/-0.0mm		Sizes 2-1/2" thru 3"	± 1.5mm
	Sizes 2-1/2" thru 4"	+ 2.5mm/-0.0mm	Shank Dia SD	Sizes 3/8" thru 1-1/2"	± 0.25mm
Socket Dia B-	Sizes 1/4" thru 2"	± 0.25mm		Sizes 2" thru 3"	± 0.50mm
	Sizes 2-1/2" thru 3"	+ 0.4mm/-0.25mm		Sizes 4"	± 0.75mm
			Shank Length SL	Sizes 3/8" thru 3/4"	± 0.0mm/-1.5mm
				Sizes 1" thru 2"	± 0.0mm/-2.0mm
				Sizes 2-1/2" thru 4"	± 0.0mm/-2.5mm



缩径管 SWAGED NIPPLE

MSS-SP-95-2000



单位尺寸为毫米 *Dimensions in Millimeters.*

公称管子规格 Nominal Pipe Size (NPS)	外径 Outside Diameter		长度 End to End "A"	壁厚 Wall Thickness							
	大端 Large End D1	小端 Small End D2		T1				T2			
				Sch40 (STD)	Sch80 (XS)	Sch160	XXS	Sch40 (STD)	Sch80 (XS)	Sch160	XXS
1/4×1/8	13.7	10.3	57	2.2	3.0	3.7	6.1	1.7	2.4	3.2	4.8
3/8×1/8	17.1	10.3	64	2.3	3.2	4.0	6.4	1.7	2.4	3.2	4.8
3/8×1/4	17.1	13.7	64	2.3	3.2	4.0	6.4	2.2	3.0	3.7	6.1
1/2×1/8	21.3	10.3	70	2.8	3.7	4.7	7.5	1.7	2.4	3.2	4.8
1/2×1/4	21.3	13.7	70	2.8	3.7	4.7	7.5	2.2	3.0	3.7	6.1
1/2×3/8	21.3	17.1	70	2.8	3.7	4.7	7.5	2.3	3.2	4.0	6.4
3/4×1/8	26.7	10.3	76	2.9	3.9	5.5	7.8	1.7	2.4	3.2	4.8
3/4×1/4	26.7	13.7	76	2.9	3.9	5.5	7.8	2.2	3.0	3.7	6.1
3/4×3/8	26.7	17.1	76	2.9	3.9	5.5	7.8	2.3	3.2	4.0	6.4
3/4×1/2	26.7	21.3	76	2.9	3.9	5.5	7.8	2.8	3.7	4.7	7.5
1×1/8	33.4	10.3	89	3.4	4.5	6.4	9.1	1.7	2.4	3.2	4.8
1×1/4	33.4	13.7	89	3.4	4.5	6.4	9.1	2.2	3.0	3.7	6.1
1×3/8	33.4	17.1	89	3.4	4.5	6.4	9.1	2.3	3.2	4.0	6.4
1×1/2	33.4	21.3	89	3.4	4.5	6.4	9.1	2.8	3.7	4.7	7.5
1×3/4	33.4	26.7	89	3.4	4.5	6.4	9.1	2.9	3.9	5.5	7.8
1-1/4×1/8	42.2	10.3	102	3.6	4.9	6.4	9.7	1.7	2.4	3.2	4.8
1-1/4×1/4	42.2	13.7	102	3.6	4.9	6.4	9.7	2.2	3.0	3.7	6.1
1-1/4×3/8	42.2	17.1	102	3.6	4.9	6.4	9.7	2.3	3.2	4.0	6.4
1-1/4×1/2	42.2	21.3	102	3.6	4.9	6.4	9.7	2.8	3.7	4.7	7.5
1-1/4×3/4	42.2	26.7	102	3.6	4.9	6.4	9.7	2.9	3.9	5.5	7.8
1-1/4×1	42.2	33.4	102	3.6	4.9	6.4	9.7	3.4	4.5	6.4	9.1
1-1/2×1/8	48.3	10.3	114	3.7	5.1	7.1	10.2	1.7	2.4	3.2	4.8
1-1/2×1/4	48.3	13.7	114	3.7	5.1	7.1	10.2	2.2	3.0	3.7	6.1
1-1/2×3/8	48.3	17.1	114	3.7	5.1	7.1	10.2	2.3	3.2	4.0	6.4
1-1/2×1/2	48.3	21.3	114	3.7	5.1	7.1	10.2	2.8	3.7	4.7	7.5
1-1/2×3/4	48.3	26.7	114	3.7	5.1	7.1	10.2	2.9	3.9	5.5	7.8
1-1/2×1	48.3	33.4	114	3.7	5.1	7.1	10.2	3.4	4.5	6.4	9.1
1-1/2×1-1/4	48.3	42.2	114	3.7	5.1	7.1	10.2	3.6	4.9	6.4	9.7
2×1/8	60.3	10.3	165	3.9	5.5	8.7	11.1	1.7	2.4	3.2	4.8
2×1/4	60.3	13.7	165	3.9	5.5	8.7	11.1	2.2	3.0	3.7	6.1
2×3/8	60.3	17.1	165	3.9	5.5	8.7	11.1	2.3	3.2	4.0	6.4
2×1/2	60.3	21.3	165	3.9	5.5	8.7	11.1	2.8	3.7	4.7	7.5
2×3/4	60.3	26.7	165	3.9	5.5	8.7	11.1	2.9	3.9	5.5	7.8
2×1	60.3	33.4	165	3.9	5.5	8.7	11.1	3.4	4.5	6.4	9.1
2×1-1/4	60.3	42.2	165	3.9	5.5	8.7	11.1	3.6	4.9	6.4	9.7
2×1-1/2	60.3	48.3	165	3.9	5.5	8.7	11.1	3.7	5.1	7.1	10.2
2-1/2×1/8	73.0	10.3	178	5.2	7.0	9.5	14.0	1.7	2.4	3.2	4.8
2-1/2×1/4	73.0	13.7	178	5.2	7.0	9.5	14.0	2.2	3.0	3.7	6.1
2-1/2×3/8	73.0	17.1	178	5.2	7.0	9.5	14.0	2.3	3.2	4.0	6.4
2-1/2×1/2	73.0	21.3	178	5.2	7.0	9.5	14.0	2.8	3.7	4.7	7.5
2-1/2×3/4	73.0	26.7	178	5.2	7.0	9.5	14.0	2.9	3.9	5.5	7.8

(Continued)



缩径管 SWAGED NIPPLE

MSS-SP-95-2000

(Continued)

单位尺寸为毫米 Dimensions in Millimeters.

公称管子规格 Nominal Pipe Size (NPS)	外径 Outside Diameter		长度 End to End "A"	壁厚 Wall Thickness							
	大端 Large End D1	小端 Small End D2		T1				T2			
				Sch40 (STD)	Sch80 (XS)	Sch160	XXS	Sch40 (STD)	Sch80 (XS)	Sch160	XXS
2-1/2x1	73.0	33.4	178	5.2	7.0	9.5	14.0	3.4	4.5	6.4	9.1
2-1/2x1-1/4	73.0	42.2	178	5.2	7.0	9.5	14.0	3.6	4.9	6.4	9.7
2-1/2x1-1/2	73.0	48.3	178	5.2	7.0	9.5	14.0	3.7	5.1	7.1	10.2
2-1/2x2	73.0	60.3	178	5.2	7.0	9.5	14.0	3.9	5.5	8.7	11.1
3x1/8	88.9	10.3	203	5.5	7.6	11.5	15.2	1.7	2.4	3.2	4.8
3x1/4	88.9	13.7	203	5.5	7.6	11.5	15.2	2.2	3.0	3.7	6.1
3x3/8	88.9	17.1	203	5.5	7.6	11.5	15.2	2.3	3.2	4.0	6.4
3x1/2	88.9	21.3	203	5.5	7.6	11.5	15.2	2.8	3.7	4.7	7.5
3x3/4	88.9	26.7	203	5.5	7.6	11.5	15.2	2.9	3.9	5.5	7.8
3x1	88.9	33.4	203	5.5	7.6	11.5	15.2	3.4	4.5	6.4	9.1
3x1-1/4	88.9	42.2	203	5.5	7.6	11.5	15.2	3.6	4.9	6.4	9.7
3x1-1/2	88.9	48.3	203	5.5	7.6	11.5	15.2	3.7	5.1	7.1	10.2
3x2	88.9	60.3	203	5.5	7.6	11.5	15.2	3.9	5.5	8.7	11.1
3x2-1/2	88.9	73.0	203	5.5	7.6	11.5	15.2	5.2	7.0	9.5	14.0
3-1/2x1/8	101.6	10.3	203	5.7	8.1	-	-	1.7	2.4	3.2	4.8
3-1/2x1/4	101.6	13.7	203	5.7	8.1	-	-	2.2	3.0	3.7	6.1
3-1/2x3/8	101.6	17.1	203	5.7	8.1	-	-	2.3	3.2	4.0	6.4
3-1/2x1/2	101.6	21.3	203	5.7	8.1	-	-	2.8	3.7	4.7	7.5
3-1/3x3/4	101.6	26.7	203	5.7	8.1	-	-	2.9	3.9	5.5	7.8
3-1/2x1	101.6	33.4	203	5.7	8.1	-	-	3.4	4.5	6.4	9.1
3-1/2x1-1/4	101.6	42.2	203	5.7	8.1	-	-	3.6	4.9	6.4	9.7
3-1/2x1-1/2	101.6	48.3	203	5.7	8.1	-	-	3.7	5.1	7.1	10.2
3-1/2x2	101.6	60.3	203	5.7	8.1	-	-	3.9	5.5	8.7	11.1
3-1/2x2-1/2	101.6	73.0	203	5.7	8.1	-	-	5.2	7.0	9.5	14.0
3-1/2x3	101.6	88.9	203	5.7	8.1	-	-	5.5	7.6	11.5	15.2
4x1/4	114.3	13.7	229	6.0	8.6	13.5	17.1	2.2	3.0	3.7	6.1
4x3/8	114.3	17.1	229	6.0	8.6	13.5	17.1	2.3	3.2	4.0	6.4
4x1/2	114.3	21.3	229	6.0	8.6	13.5	17.1	2.8	3.7	4.7	7.5
4x3/4	114.3	26.7	229	6.0	8.6	13.5	17.1	2.9	3.9	5.5	7.8
4x1	114.3	33.4	229	6.0	8.6	13.5	17.1	3.4	4.5	6.4	9.1
4x1-1/4	114.3	42.2	229	6.0	8.6	13.5	17.1	3.6	4.9	6.4	9.7
4x1-1/2	114.3	48.3	229	6.0	8.6	13.5	17.1	3.7	5.1	7.1	10.2
4x2	114.3	60.3	229	6.0	8.6	13.5	17.1	3.9	5.5	8.7	11.1
4x2-1/2	114.3	73.0	229	6.0	8.6	13.5	17.1	5.2	7.0	9.5	14.0
4x3	114.3	88.9	229	6.0	8.6	13.5	17.1	5.5	7.6	11.5	15.2
4x3-1/2	114.3	101.6	229	6.0	8.6	13.5	17.1	5.7	8.1	-	-

(1) Wall Thickness (T1, T2) in Accordance with ASME B36.10M

(1) 管壁厚 (T1,T2) 需符合 ASME B36.10M

PBE: PLAIN BOTH END (双端平口)
 PSE: PLAIN SMALL END (小端平口)
 PLE: PLAIN LARGE END (大端平口)

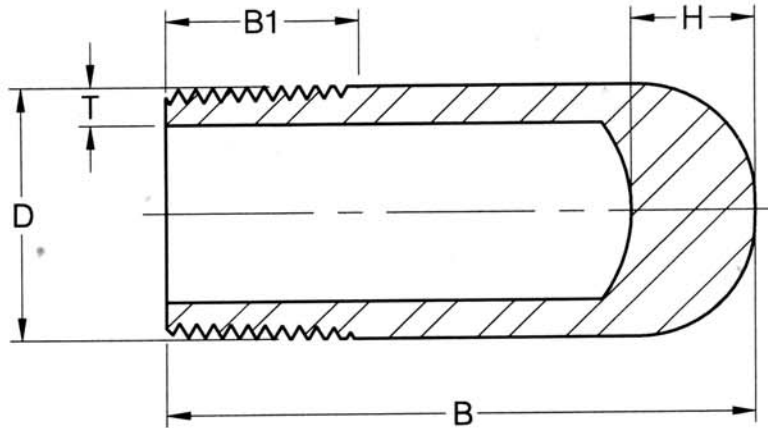
BBE: BEVEL BOTH END (双端斜削)
 BSE: BEVEL SMALL END (小端斜削)
 BLE: BEVEL LARGE END (大端斜削)

TBE: THREAD BOTH END (双端螺纹)
 TSE: THREAD SMALL END (小端螺纹)
 TLE: THREAD LARGE END (大端螺纹)



大圆头管塞 BULL PLUGS

MSS-SP-95-2000



单位尺寸为毫米 *Dimensions in Millimeters.*

Size (in)	D	B	B1	T Min				H
				Sch 40 (STD)	Sch 80 (XS)	Sch 160	XXS	
1/8	10.3	34	9.5	1.73	2.41	3.20	4.8	14
1/4	13.7	34	11.0	2.24	3.02	3.70	6.1	14
3/8	17.1	57	12.5	2.31	3.20	4.00	6.4	14
1/2	21.3	64	14.5	2.77	3.73	4.78	7.47	14
3/4	26.7	70	16.0	2.87	3.91	5.56	7.82	18
1	33.4	76	19.0	3.38	4.56	6.35	9.09	18
1-1/4	42.2	83	20.5	3.56	4.85	6.35	9.70	18
1-1/2	48.3	89	20.5	3.68	5.05	7.14	10.15	18
2	60.3	102	22.0	3.91	5.54	8.74	11.07	20
2-1/2	73.0	127	27.0	5.16	7.01	9.53	14.02	20
3	88.9	152	28.5	5.49	7.60	11.13	15.24	20
4	114.3	178	32.0	6.35	8.08	13.49	17.12	20

(1) Thread in Accordance with ASME B1.20.1

(2) Wall Thickness (T Min.) in Accordance with ASME B36.10M.

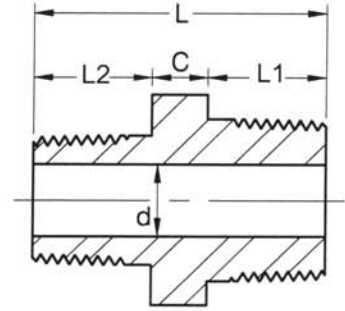
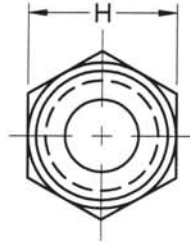
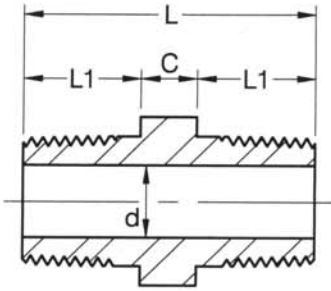
(1) 螺紋依照ASME.B1.20.1

(2) 壁厚依照ASME B36.10M



六角双接头 HEX NIPPLES

螺纹按 GB/T12716 制造
ASNI/ASME B1.20.1-1983-NPT



FULL SIZES
同径六角双接头

REDUCING SIZES
异径六角双接头

公称管子规格 Size NPS	C	L1	L	d		H
				3M	6M	
1/8	6.0	10.0	26.0	4.0	--	12.0
1/4	8.0	14.0	36.0	6.4	--	17.0
3/8	8.0	14.0	36.0	9.2	4.3	19.0
1/2	9.0	19.0	47.0	11.8	6.4	24.0
3/4	10.0	19.0	48.0	15.6	11.1	30.0
1	11.0	24.0	59.0	20.7	15.2	35.0
1-1/4	12.0	24.0	60.0	29.5	22.8	46.0
1-1/2	14.0	24.0	62.0	34.0	28.0	50.0
2	16.0	26.0	68.0	42.9	38.2	65.0
2-1/2	18.0	38.0	94.0	53.8	--	80.0
3	20.0	40.0	100.0	66.5	--	95.0
4	24.5	40.0	105.0	87.3	--	125.5

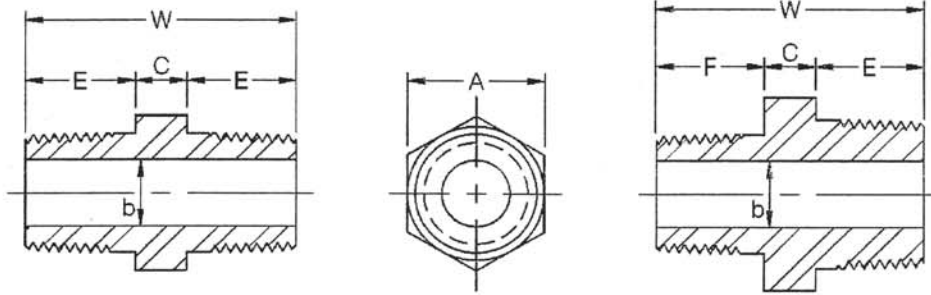
公称管子规格 Size NPS	C	L1	L2	L	d		H
					3M	6M	
3/8x1/4	8.0	14.0	14.0	36.0	6.4	--	19.0
1/2x1/4	9.0	19.0	14.0	42.0	6.4	--	24.0
1/2x3/8	9.0	19.0	14.0	42.0	9.2	4.3	24.0
3/4x1/4	10.0	19.0	14.0	43.0	6.4	--	30.0
3/4x3/8	10.0	19.0	14.0	43.0	9.2	4.3	30.0
3/4x1/2	10.0	19.0	19.0	48.0	11.8	6.4	30.0
1x3/8	11.0	24.0	14.0	49.0	9.2	4.3	35.0
1x1/2	11.0	24.0	19.0	54.0	11.8	6.4	35.0
1x3/4	11.0	24.0	19.0	54.0	15.6	11.1	35.0
1-1/4x1/2	12.0	24.0	19.0	55.0	11.8	6.4	46.0
1-1/4x3/4	12.0	24.0	19.0	55.0	15.6	11.1	46.0
1-1/4x1	12.0	24.0	24.0	60.0	20.7	15.2	46.0
1-1/2x3/4	14.0	24.0	19.0	57.0	15.6	11.1	50.0
1-1/2x1	14.0	24.0	24.0	62.0	20.7	15.2	50.0
1-1/2x1-1/4	14.0	24.0	24.0	62.0	29.5	22.8	50.0
2x1	16.0	26.0	24.0	66.0	20.7	15.2	65.0
2x1-1/4	16.0	26.0	24.0	66.0	29.5	22.8	65.0
2x1-1/2	16.0	26.0	24.0	66.0	34.0	28.0	65.0
2-1/2x1-1/4	18.0	38.0	24.0	80.0	29.5	22.8	80.0
2-1/2x1-1/2	18.0	38.0	24.0	80.0	34.0	28.0	80.0
2-1/2x2	18.0	38.0	26.0	82.0	42.9	38.2	80.0
3x1-1/2	20.0	40.0	24.0	84.0	34.0	28.0	95.0
3x2	20.0	40.0	26.0	86.0	42.9	38.2	95.0
3x2-1/2	20.0	40.0	38.0	98.0	53.8	--	95.0

(1)3M=3000# ; 6M=6000#
3M=3000磅;6M=6000磅



六角双接头 HEX NIPPLES

BS3799-1974



FULL SIZE

REDUCING SIZE

Dimensions in Millimeters.

Nominal Size				A Min	W Min	E Min	b		C Min	F Min
Equal		Reducing					3M	6M		
in	mm	in	mm	mm	mm	mm	mm	mm	mm	
1/8	(6)	--	--	11	26	10	5	2	6	--
1/4	(8)	--	--	15	36	15	8	6	6	--
--	--	1/4 x 1/8	(8 x 6)	15	31	15	5	2	6	10
3/8	(10)	--	--	18	40	16	11	8	8	--
--	--	3/8 x 1/4	(10 x 8)	18	39	16	8	6	8	15
1/2	(15)	--	--	22	48	20	14	11	8	--
--	--	1/2 x 3/8	(15 x 10)	22	44	20	11	8	8	16
--	--	1/2 x 1/4	(15 x 8)	22	43	20	8	6	8	15
3/4	(20)	--	--	27	52	21	19	13	10	--
--	--	3/4 x 1/2	(20 x 15)	27	50	21	14	11	9	20
--	--	3/4 x 3/8	(20 x 10)	27	46	21	11	8	9	16
1	(25)	--	--	35	60	25	24	17	10	--
--	--	1 x 3/4	(25 x 20)	35	56	25	19	13	10	21
--	--	1 x 1/2	(25 x 15)	35	55	25	14	11	10	20
1-1/2	(40)	--	--	50	68	26	38	30	16	--
--	--	1-1/2 x 1	(40 x 25)	50	67	26	24	17	16	25
--	--	1-1/2 x 3/4	(40 x 20)	50	63	26	19	13	16	21
--	--	1-1/2 x 1/2	(40 x 15)	50	62	26	14	11	16	20
2	(50)	--	--	62	71	27	49	39	17	--
--	--	2 x 1-1/2	(50 x 40)	62	70	27	38	30	17	26
--	--	2 x 1	(50 x 25)	62	70	27	24	17	18	25
--	--	2 x 3/4	(50 x 20)	62	65	27	19	13	17	21
--	--	2 x 1/2	(50 x 15)	62	65	27	14	11	18	20

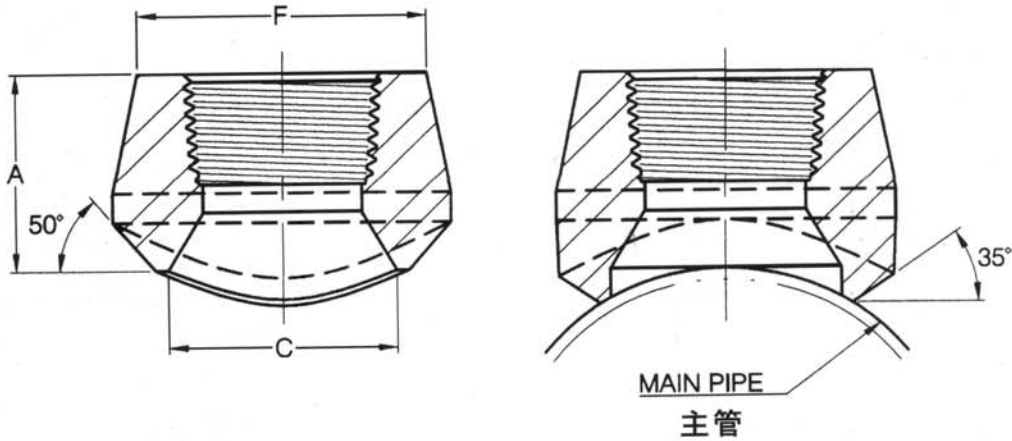
Nominal Size				A	W	E	b	C	F
Equal		Reducing							
in	mm	in	mm	mm	mm	mm	mm	mm	mm
2-1/2"	(65)	--	--	80.0	94.0	38.0	53.8	18.0	--
		2-1/2 x 2	(65 x 50)	80.0	82.0	38.0	49.0	18.0	26.0
		2-1/2 x 1-1/2	(65 x 40)	80.0	81.0	38.0	38.0	18.0	25.0
		2-1/2 x 1	(65 x 25)	80.0	77.0	38.0	24.0	18.0	21.0
3"	(80)	--	--	95.0	100.0	40.0	66.5	20.0	--
		3 x 2-1/2	(80 x 65)	95.0	98.0	40.0	53.8	20.0	38.0
		3 x 2	(80 x 50)	95.0	86.0	40.0	49.0	20.0	26.0
		3 x 1-1/2	(80 x 40)	95.0	85.0	40.0	38.0	20.0	25.0
4"	(100)	--	--	125.5	104.5	40.0	87.3	24.5	--
		4 x 3	(100 x 80)	125.5	104.5	40.0	66.5	24.5	40.0
		4 x 2-1/2	(100 x 65)	125.5	102.5	40.0	53.8	24.5	38.0
		4 x 2	(100 x 50)	125.5	90.5	40.0	49.0	24.5	26.0

(1) 3M = 3000#; 6M = 6000#



螺纹管座 BRANCH OUTLET FITTINGS THREADED EDN

MSS-SP-97-2001



单位尺寸为毫米 *Dimensions in Millimeters.*

支管公称管子规格 Out-Let Pipe NPS (in)	A	C	F
-----------------------------------	---	---	---

3000 磅 公称壁厚 **STD/xs**
3000 Lb **Standard and extra strong**

1/8	19.0	13.7	17.3
1/4	19.0	13.7	22.0
3/8	21.0	17.1	25.8
1/2	25.0	21.3	31.3
3/4	27.0	26.7	37.1
1	33.0	33.4	45.5
1-1/4	33.0	42.2	54.9
1-1/2	35.0	48.3	61.6
2	38.0	60.3	75.3
2-1/2	46.0	73.0	91.7
3	51.0	88.9	109.1
4	57.0	114.3	137.2

6000 磅 公称壁厚 **S160/xxs**
6000 Lb **Schedule 160 and double extra strong**

1/2	32.0	16.6	33.9
3/4	37.0	21.2	41.2
1	40.0	27.0	49.9
1-1/4	41.0	35.8	58.6
1-1/2	43.0	41.2	66.7
2	52.0	51.6	83.2

(1) Thread in Accordance with GB/T12716 ASME B1.20.1

(2) 3000LB outlet size 4 and less fit a number of run pipe sizes and the fitting are marked accordingly. See page 30 for Conventional Run Size Combination.

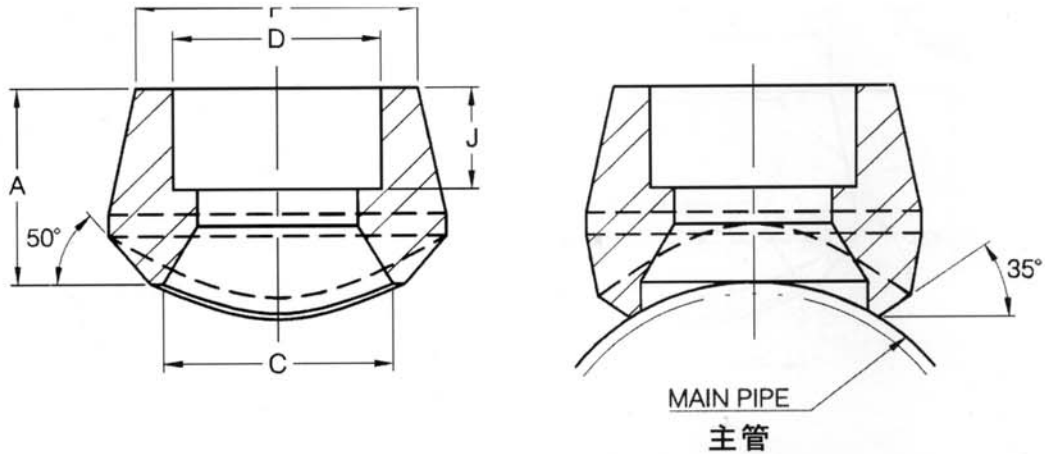
(1) 螺紋按GB/T12716, ASME B1.20.1制造

(2) 4" 以下 (含4") 3000磅级管座, 主管尺寸与标志一致, 参考30页主管常规尺寸共用表



承接焊管座 BRANCH OUTLET FITTINGS SOCKET WELDING END

MSS-SP-97-2001



单位尺寸为毫米 *Dimensions in Millimeters.*

支管公称管子规格 Out-Let Pipe NPS (in)	A	C	D	F	J (Min)
-----------------------------------	---	---	---	---	------------

3000 磅 公称壁厚 *STD/xs*
3000 Lb *Standard and extra strong*

1/8	19.0	13.7	10.9	17.3	10.0
1/4	19.0	13.7	14.4	22.0	10.0
3/8	21.0	17.1	17.8	25.8	10.0
1/2	25.0	21.3	22.0	31.3	10.0
3/4	27.0	26.7	27.3	37.1	13.0
1	33.0	33.4	34.1	45.5	13.0
1-1/4	33.0	42.2	42.8	54.9	13.0
1-1/2	35.0	48.3	48.9	61.6	13.0
2	38.0	60.3	61.4	75.3	16.0
2-1/2	46.0	73.0	74.2	91.7	16.0
3	51.0	88.9	90.1	109.1	16.0
4	57.0	114.3	115.8	137.2	19.0

6000 磅 公称壁厚 *S160/xxs*
6000 Lb *Schedule 160 and double extra strong*

1/2	32.0	16.6	22.0	33.9	10.0
3/4	37.0	21.2	27.3	41.2	13.0
1	40.0	27.0	34.1	49.9	13.0
1-1/4	41.0	35.8	42.8	58.6	13.0
1-1/2	43.0	41.2	48.9	66.7	13.0
2	52.0	51.6	61.4	83.2	16.0

(1) Socket Dimension in Accordance with ASME B16.11.

(2) 3000LB Outlet size 4 and less fit a number of run pipe sizes and the fitting are marked accordingly. See page 30 for Conventional Run Size Combination.

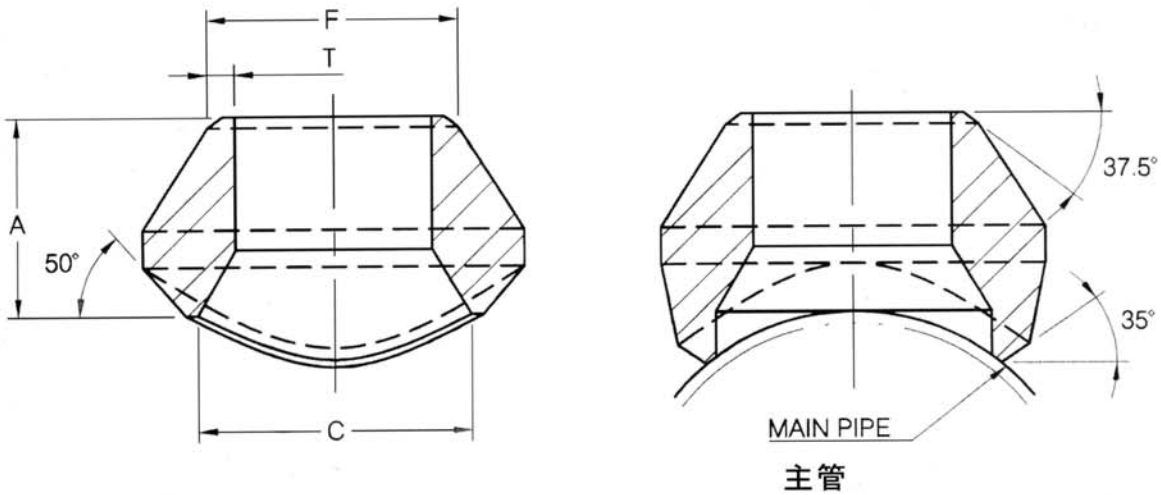
(1) 套焊尺寸依据 ASME B16.11

(2) 4" 以下(含4") 3000磅管座, 主管尺寸与标志一致, 参考30页主管常规尺寸共用表。



对焊管座 BRANCH OUTLET FITTINGS BUTT WELDING END

MSS-SP-97-2001



STANDARD WEIGHT

尺寸单位为毫米 *Dimensions in Millimeters.*

支管公称管子规格 Out-Let Pipe NPS (in)	A	C	F	T
1/8	16.0	13.7	10.3	1.73
1/4	16.0	13.7	13.7	2.24
3/8	19.0	17.1	17.1	2.31
1/2	19.0	21.3	21.3	2.77
3/4	22.0	26.7	26.7	2.87
1	27.0	33.4	33.4	3.38
1-1/4	32.0	42.2	42.2	3.56
1-1/2	33.0	48.3	48.3	3.68
2	38.0	60.3	60.3	3.91
2-1/2	41.0	73.0	73.0	5.16
3	44.0	88.9	88.9	5.49
3-1/2	48.0	101.6	101.6	5.74
4	51.0	114.3	114.3	6.02
5	57.0	141.3	141.3	6.55
6	60.0	168.3	168.3	7.11
8	70.0	219.3	219.3	8.11
10	78.0	273.1	273.1	9.27
12	86.0	323.9	323.9	9.53
14	89.0	355.6	355.6	9.53
16	94.0	406.4	406.4	9.53
18	97.0	457.2	457.2	9.53
20	102.0	508.0	508.0	9.53
24	116.0	609.6	609.6	9.53

(1) Weld Bevel in Accordance with ASME B16.25.

(2) Outlet size 4 and less fit a number of run pipe sizes and the fittings are marked accordingly. See page 30 for Conventional Run Size Combination.

(3) Outlet sizes 5 and up order to specific size combination.

(1) 对焊斜削按ASME B16.25制造。

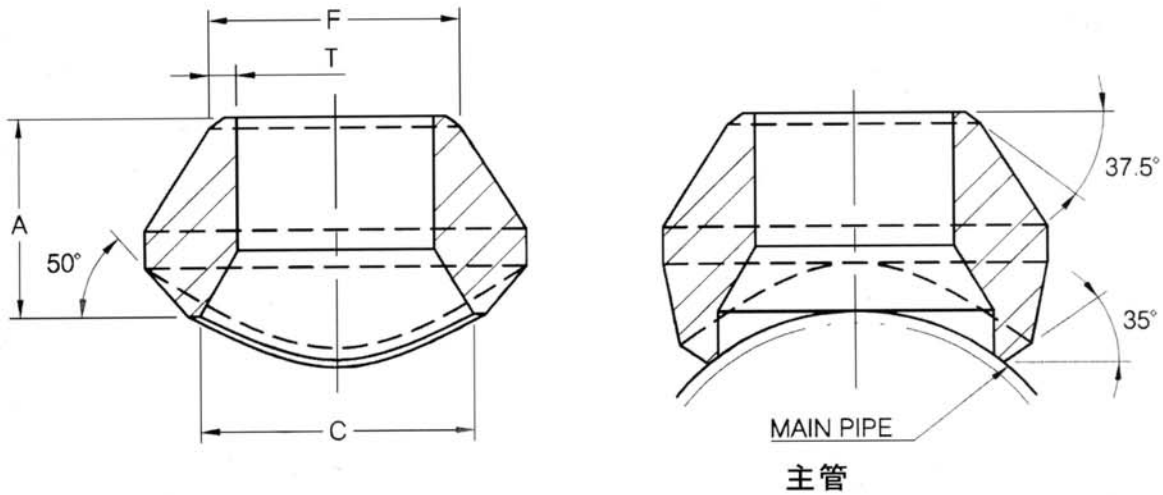
(2) 4" 以下(含4")管座, 主管尺寸与标志一致, 参考30页主管常规尺寸共用表。

(3) 5" 以上(含5")管座为特殊尺寸, 本厂可依顾客要求制作。



对焊管座 BRANCH OUTLET FITTINGS BUTT WELDING END

MSS-SP-97-2001



EXTRA STRONG

尺寸单位为毫米 *Dimensions in Millimeters.*

支管公称管子规格 Out-Let Pipe NPS (in)	A	C	F	T
1/8	16.0	13.7	10.3	2.41
1/4	16.0	13.7	13.7	3.02
3/8	19.0	17.1	17.1	3.20
1/2	19.0	21.3	21.3	3.73
3/4	22.0	26.7	26.7	3.91
1	27.0	33.4	33.4	4.55
1-1/4	32.0	42.2	42.2	4.85
1-1/2	33.0	48.3	48.3	5.08
2	38.0	60.3	60.3	5.54
2-1/2	41.0	73.0	73.0	7.01
3	44.0	88.9	88.9	7.62
3-1/2	48.0	101.6	101.6	8.56
4	51.0	114.3	114.3	8.56
5	57.0	141.3	141.3	9.53
6	78.0	168.3	168.3	10.97
8	99.0	219.3	219.3	12.70
10	94.0	273.1	273.1	12.70
12	103.0	323.9	323.9	12.70
14	100.0	355.6	355.6	12.70
16	106.0	406.4	406.4	12.70
18	111.0	457.2	457.2	12.70
20	119.0	508.0	508.0	12.70
24	140.0	609.6	609.6	12.70

(1) Weld Bevel in Accordance with ASME B16.25.

(2) Outlet size 4 and less fit a number of run pipe sizes and the fittings are marked accordingly. See page 30 for Conventional Run Size Combination.

(3) Outlet sizes 5 and up order to specific size combination.

(1) 对焊斜削按ASME B16.25制造。

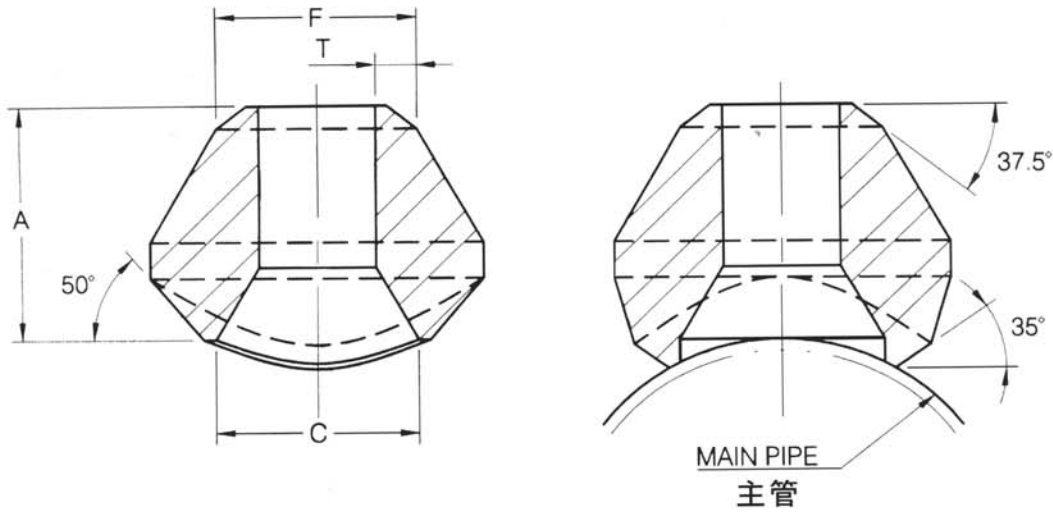
(2) 4" 以下(含4")管座, 主管尺寸与标志一致, 参考30页主管常规尺寸共用表。

(3) 5" 以上(含5")管座为特殊尺寸, 本厂可依顾客要求制作。



对焊管座 BRANCH OUTLET FITTINGS BUTT WELDING END

MSS-SP-97-2001



SCHEDULE 160 And DOUBLE EXTRA STRONG

尺寸单位为毫米 Dimensions in Millimeters.

支管公称 管子规格 Out-Let Pipe NPS (in)	A	C	F	T	
				S160	XXS
1/2	28.0	13.8	21.3	4.78	7.47
3/4	32.0	18.9	26.7	5.56	7.82
1	38.0	24.3	33.4	6.35	9.09
1-1/4	44.0	32.5	42.2	6.35	9.70
1-1/2	51.0	38.1	48.3	7.14	10.15
2	55.0	49.2	60.3	8.74	11.07
2-1/2	62.0	59.0	73.0	9.53	14.02
3	73.0	73.7	88.9	11.13	15.24
4	84.0	97.2	114.3	13.49	17.12
5	94.0	122.2	141.3	15.88	19.05
6	105.0	146.4	168.3	18.26	21.95

- (1) Weld Bevel in Accordance with ASME B16.25
 (2) Outlet size by order to specific size combination.
 (1) 对焊按ASME. B16.25制造
 (2) 管座尺寸按顾客合同要求制造。

常规尺寸共用表 CONVENTIONAL RUN SIZE COMBINATIONS

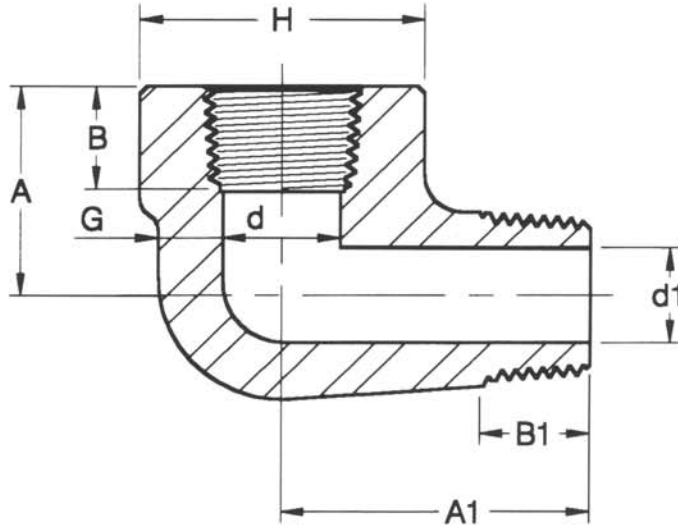
3000# THREAD / SOCKET-WELD END STD/XS BUTT WELDING END
 3000 磅螺紋 / 承插焊端 STD/XS对焊端

RUN SIZE (主管尺寸)	OUTLET SIZE (座管尺寸)								
	1/2"	3/4"	1"	1-1/4"	1-1/2"	2"	2-1/2"	3"	4"
3/4"		1"	1-1/4"	1-1/2"	2"	2-1/2"	3"	3-1/2"	5"
1"		1-1/4"	1-1/2"	2"	2-1/2"	3"	3-1/2"	4"	6"
1-1/4"		1-1/2"	2"	2-1/2"	3"	3-1/2"	4"	5"	8"
1-1/2"		2"	2-1/2"	3"	3-1/2"	4"	5"	6"	10"
2"		2-1/2"	3"	3-1/2"	4"	5"	6"	8"	12"~14"
2-1/2"		3"	3-1/2"	4"	5"	6"	8"	10"	16"~18"
3"		3-1/2"	4"	5"	6"	8"	10"	12"~16"	20"~24"
3-1/2"		4"	5"	6"	8"	10"	12"~16"	18"~36"	26"~36"
4"		5"	6"	8"	10"	12"~16"	18"~36"		
5"		6"	8"	10"	12"~16"	18"~36"			
6"		8"	10"	12"~16"	18"~36"				
8"		10"	12"~16"	18"~36"					
10"		12"~16"	18"~36"						
12"~14"		18"~36"							
16"~18"									
20"~24"									
26"~36"									



内外螺纹弯头 STREET ELBOWS

ASME B16.11-2005



3000Lbs

Dim Nom Pipe Size	H	A	A1	d	d1	G (Min)	B (Min)	B1 (Min)
1/4	25	22.2	31.7	11.2	7	3.30	8.0	10.3
3/8	33	25.4	38.1	14.5	9	3.51	9.0	10.4
1/2	38	28.6	41.2	15.7	13	4.09	11.0	13.6
3/4	46	34.9	47.6	20.9	16	4.32	12.5	13.8
1	56	44.5	57.2	26.6	20	4.98	14.5	17.3
1-1/4	62	50.8	66.7	35.0	28	5.28	17.0	18.0
1-1/2	75	54	71.4	40.9	30	5.56	18.0	18.4
2	84	63.5	84	52.5	40	7.14	19.0	19.3

6000Lbs

Dim Nom Pipe Size	H	A	A1	d	d1	G (Min)	B (Min)	B1 (Min)
1/4	33	25.4	38.1	11.2	3.0	6.60	8.0	10.3
3/8	38	28.6	41.2	14.5	4.7	6.98	9.0	10.4
1/2	46	34.9	47.6	15.7	6.3	8.15	11.0	13.6
3/4	56	44.5	57.2	20.9	11.1	8.53	12.5	13.8
1	62	50.8	66.7	26.6	15.2	9.93	14.5	17.3
1-1/4	75	54	71.4	35.0	22.8	10.59	17.0	18.0
1-1/2	84	63.5	84	40.9	27.9	11.07	18.0	18.4

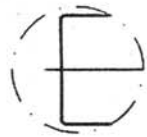
"H" in Accordance with ASME B16.11

"H" 尺寸依据 ASME B16.11



短管 NIPPLE

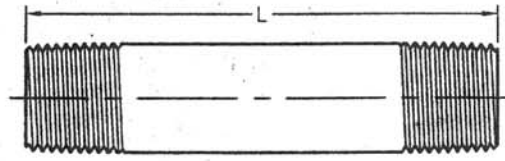
ASME B36.10 M-2004/ASME B36.19 M-2004



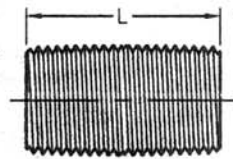
Plain End < 平端 >



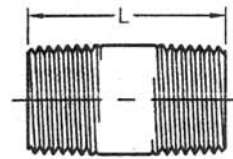
Bevel End < 斜端 >



Long Nipple 长短管



Close Nipple
< 紧密短管 >



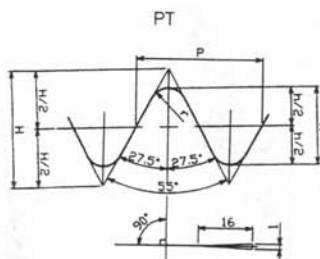
Short Nipple
< 短管 >

Dimensions in Inch

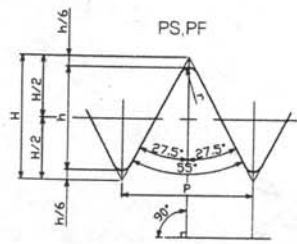
NPS	L		
	Close Nipple	Short Nipple	Long Nipple
1/8	3/4	1-1/2	2-12
1/4	7/8	1-1/2	2-12
3/8	1	1-1/2	2-12
1/2	1-1/8	1-1/2	2-12
3/4	1-3/8	2	2-1/2-12
1	1-1/2	2	2-1/2-12
1-1/4	1-5/8	2-1/2	3-12
1-1/2	1-3/4	2-1/2	3-12
2	2	2-1/2	3-12
2-1/2	2-1/2	3	3-1/2-12
3	2-5/8	3	3-1/2-12
3-1/2	2-3/4	4	4-1/2-12
4	2-7/8	4	4-1/2-12
5	3	4-1/2	5-12
6	3-1/8	4-1/2	5-12

- (1) Thread in Accordance with ASME B1.20.1 螺纹按 ASME B1.20.1 制造
 (2) Weld Bevel Accordance with ASME B16.25 对焊按 ASME B16.25 制造

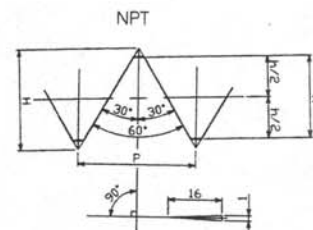
Shape of Threaded 螺纹型式



H=0.960237P
h=0.640327P



H=0.960491P
h=0.640327P



H=0.866025P
h=0.8P

无缝钢管和无缝不锈钢管尺寸表

DIMENSIONS OF SEAMLESS STEEL PIPE AND SEAMLESS STAINLESS STEEL PIPE

单位: 毫米
Unit: mm

(ASME B36.10M-2004 ASME B36.19M-2004)

尺寸偏差 TOLERANCES		公称管 子规格 NPS IN	外径 Outside Dia.			钢管 STEEL PIPE										不锈钢管 ST. ST PIPE								
A53 A106 O. D.	API 5L O. D.		A530 O. D.	STD	MAX	MIN	S/10	S/20	S/30	S/40	STD	S/60	XS	S/80	S/100	S/120	S/140	S/160	XXS	S/5S	S/10S	S/40S	S/80S	
+1/64"	+1/64"	1/8	10.3	10.7	9.5	1.24		1.45	1.73	S/40		S/80	2.41									1.2	1.7	2.4
		1/4	13.7	14.1	12.9	1.65		1.85	2.24	S/40		S/80	3.02									1.7	2.2	3.0
		3/8	17.1	17.5	16.3	1.65		1.85	2.31	S/40		S/80	3.20									1.7	2.3	3.2
		1/2	21.3	21.7	20.5	2.11		2.41	2.77	S/40		S/80	3.73				4.78	7.47	1.7	2.1	2.8	3.7		
		3/4	26.7	27.1	25.9	2.11		2.41	2.87	S/40		S/80	3.91				5.56	7.82	1.7	2.1	2.9	3.9		
		1	33.4	33.8	32.8	2.77		2.90	3.38	S/40		S/80	4.55				6.35	9.09	1.7	2.8	3.4	4.6		
		1-1/4	42.2	42.6	41.4	2.77		2.97	3.56	S/40		S/80	4.85				6.35	9.70	1.7	2.8	3.6	4.9		
		1-1/2	48.3	48.7	47.5	2.77		3.18	3.68	S/40		S/80	5.08				7.14	10.15	1.7	2.8	3.7	5.1		
		2	60.3	60.9	59.7	2.77		3.18	3.91	S/40		S/80	5.54				8.74	11.07	1.7	2.8	3.9	5.5		
		2-1/2	73.0	73.7	72.2	3.05		4.78	5.16	S/40		S/80	7.01				9.53	14.02	2.1	3.1	5.2	7.0		
		3	88.9	89.8	88.0	3.05		4.78	5.49	S/40		S/80	7.62				11.13	15.24	2.1	3.1	5.5	7.6		
		3-1/2	101.6	102.6	100.6	3.05		4.78	5.74	S/40		S/80	8.08											
		4	114.3	115.4	113.2	3.05		4.78	6.02	S/40		S/80	8.56											
		5	141.3	142.7	139.9	3.40			6.55	S/40		S/80	9.53											
		6	168.3	170.0	166.6	3.40			7.11	S/40		S/80	10.97											
		8	219.1	221.3	216.9	3.76	6.35	7.04	8.18	S/40	10.31	S/80	12.70	15.09	18.26	20.62	23.01	22.23	2.8	3.8	8.2	12.7		
		10	273.0	275.8	270.4	4.19	6.35	7.80	9.27	S/40	12.70	S/60	15.09	18.26	21.44	25.40	28.58	S/140	3.4	4.2	9.3	12.7		
		12	323.8	327.1	320.7	4.57	6.35	8.38	10.31	S/40	14.27	S/60	17.48	21.44	25.40	28.58	33.32	S/120	4.0	4.6	9.5	12.7		
		14	355.6	359.2	352.0	6.35	7.92	9.53	11.13	S/30	15.09	S/60	19.05	23.83	27.79	31.75	35.71							
		16	406.4	410.5	402.3	6.35	7.92	9.53	12.70	S/30	16.66	S/60	21.44	26.19	30.96	36.53	40.49							
		18	457.0	461.8	452.6	6.35	7.92	11.13	14.27	S/30	19.05	S/60	23.83	29.36	34.93	39.67	45.24							
		20	508.0	513.1	502.9	6.35	9.53	12.70	15.09	S/20	20.62	S/30	26.19	32.54	38.10	44.45	50.01							
		22	559.0			6.35	9.53	12.70		S/20	22.23	S/30	28.58	34.93	41.28	47.63	53.98							
		24	610.0	615.7	603.5	6.35	9.53	14.27	17.48	S/20	24.61	S/30	30.96	38.89	46.02	52.37	59.54							
		26	660.0			7.92	12.70			S/20	9.53	S/30												
		28	711.0			7.92	12.70	15.88		S/20	9.53	S/30												
		30	762.0			7.92	12.70	15.88		S/20	9.53	S/30												
		32	813.0			7.92	12.70	15.88	17.48	S/20	9.53	S/30												
		34	864.0			7.92	12.70	15.88	17.48	S/20	9.53	S/30												
		36	914.0			7.92	12.70	15.88	19.05	S/20	9.53	S/30												

包装单 PACKING LIST(1)

单位：只 Unit：PC

CARTON SIZE(纸箱尺寸)：28 × 20 × 18 cm(公分)(L × W × H)

SIZE NPS	90D ELBOW		45D ELBOW		TEE		COUPLING		HALF COUPLING		GROSS	
	2000# NPT 3000# SW	3000# NPT	2000# NPT 3000# SW	3000# NPT	2000# NPT 3000# SW	3000# NPT	3000# SW	3000# NPT	3000# SW	3000# NPT	2000# NPT 3000# SW	3000# NPT
1/4"	150	100	150	100	100	80	350	250	400	800	40	40
3/8"	100	80	100	80	80	50	250	200	300	500	40	40
1/2"	80	50	80	50	50	35	120	100	150	250	40	30
3/4"	50	25	50	30	35	20	80	70	80	150	30	20
1"	30	20	30	20	20	15	50	35	50	80	20	12
1-1/4"	20	15	20	15	15	10	30	20	30	35	10	6
1-1/2"	15	6	15	8	10	5	25	15	25	30	6	4
2"	8	5	10	6	6	4	15	10	15	20	4	4
2-1/2"	4	2	5	2	3	2	10	5	10	12	3	2
3"	2	2	2	2	2	1	6	3	6	6	2	2
4"	1	1	1	1	1	1	4	2	4	4	1	1

SIZE NPS	CAP 3000# NPT/SW	STREET ELBOW 3000# NPT	INSERT 3000# SW	HEX PLUG NPT	ROUND PLUG NPT	SQUARE PLUG NPT	UNION 3000# NPT/SW	BUSHING NPT	HEX NIPPLE NPT	OUT-LET 3000# NPT/SW	SWAGE S40/S80 S160/XXS	BOSS	
												3000# SW	3000# NPT
1/4"	300	150	300	800	250	800	70	600	500	200	200	250	200
3/8"	250	80	300	600	200	500	70	500	400	150	150	150	150
1/2"	130	50	150	250	150	300	50	400	200	150	100	90	80
3/4"	80	30	100	150	100	200	30	200	100	100	70	70	40
1"	50	20	80	100	80	150	20	100	65	50	50	35	30
1-1/4"	30	15	70	35	50	80	14	70	35	35	30	30	20
1-1/2"	25	8	50	25	30	50	10	50	25	25	20	25	15
2"	15	5	25	20	15	30	6	25	15	15	8	15	10
2-1/2"	10	4	15	8	10	15	3	15	5	10	4	-	-
3"	4	2	10	6	5	10	2	10	3	6	3	-	-
4"	3	1	4	3	3	3	-	5	2	3	1	-	-

WOODEN CASE SIZE(木箱尺寸)：102 × 86 × 72 cm(公分)/60 CARTON(只, 纸箱)

WOODEN CASE SIZE(木箱尺寸)：86 × 82 × 72 cm(公分)/48 CARTON(只, 纸箱)

WOODEN CASE SIZE(木箱尺寸)：86 × 82 × 54 cm(公分)/36 CARTON(只, 纸箱)

包装单 PACKING LIST(1)

CARTON SIZE(纸箱尺寸) : 28 x 20 x 18cm (公分) (L x W x H)

单位 : 只 Unit : PC

SIZE NPS	90D ELBOW		45D ELBOW		TEE			CAP	
	6000# NPT	6000# SW	6000# NPT	6000# SW	6000# NPT	6000# SW	9000# SW	6000# NPT	6000# SW
1/4"	80	100	80	100	50	80	-	250	200
3/8"	50	80	50	80	35	50	-	130	150
1/2"	25	50	25	50	20	35	25	80	80
3/4"	20	25	20	30	12	20	15	50	50
1"	12	20	12	20	10	15	10	30	30
1-1/4"	5	15	5	15	5	10	6	25	25
1-1/2"	4	6	4	8	4	5	4	15	15
2"	2	5	2	6	2	4	2	10	8
2-1/2"	-	-	-	-	-	2	-	4	5
3"	-	-	-	-	-	1	-	3	3
4"	-	-	-	-	-	1	-	2	2

SIZE NPS	CROSS		COUPLING		HALF COUPLING		BOSS		INSERT 6000# SW	STREET ELBOW 6000# NPT
	6000# NPT	6000# SW	6000# NPT	6000# SW	6000# NPT	6000# SW	6000# NPT	6000# SW		
1/4"	40	80	200	250	150	300	150	200	250	80
3/8"	30	40	100	200	80	150	100	150	200	50
1/2"	20	30	60	100	80	80	60	80	120	25
3/4"	12	21	35	70	50	50	35	40	80	20
1"	6	12	20	35	35	30	20	30	60	12
1-1/4"	4	6	15	20	25	25	15	20	50	5
1-1/2"	2	4	10	15	20	20	10	15	30	4
2"	1	2	5	10	6	10	5	10	20	2
2-1/2"	-	-	3	5	4	-	-	-	10	-
3"	-	-	2	3	2	-	-	-	8	-
4"	-	-	1	2	1	-	-	-	2	-

WOODEN CASE SIZE(木箱尺寸) : 102 x 86 x 72 cm(公分) / 60 CARTON(只, 纸箱)

WOODEN CASE SIZE(木箱尺寸) : 86 x 82 x 72 cm(公分) / 48 CARTON(只, 纸箱)

WOODEN CASE SIZE(木箱尺寸) : 86 x 82 x 54 cm(公分) / 36 CARTON(只, 纸箱)



重量表 WEIGHT LIST

单位:公斤 Unit:KG

WEIGHT 种类 DESCRIPTION	SIZE 重量 尺寸	1/8"	1/4"	3/8"	1/2"	3/4"	1"	1-1/4"	1-1/2"	2"	2-1/2"	3"	4"
2000LBS SCREWED 2000磅螺紋													
90°ELBOW		0.10	0.08	0.13	0.25	0.35	0.54	0.82	1.06	1.74	3.14	4.81	10.21
45°ELBOW		0.14	0.13	0.10	0.20	0.27	0.41	0.68	0.82	1.41	3.46	5.44	8.96
TEE		0.13	0.12	0.17	0.31	0.43	0.69	1.07	1.39	2.16	4.11	6.12	14.74
CROSS					0.40	0.51	0.77	1.11	1.62				
3000LBS SCREWED 3000磅螺紋													
90°ELBOW		0.10	0.14	0.29	0.43	0.69	1.14	1.42	2.63	2.92	5.99	8.88	14.85
45°ELBOW		0.13	0.12	0.24	0.34	0.56	0.94	1.03	2.05	2.23	3.71	5.97	8.96
TEE		0.13	0.20	0.38	0.56	0.92	1.49	1.76	3.27	3.53	6.99	10.19	19.13
COUPLING		0.05	0.04	0.06	0.13	0.19	0.45	0.81	1.07	1.40	2.29	3.38	6.28
HALF COUPLING		0.02	0.02	0.03	0.06	0.10	0.23	0.34	0.54	0.70	1.13	1.68	3.11
RED COUPLING		0.05	0.05	0.06	0.13	0.19	0.39	0.68	0.99	1.37	2.07	3.08	5.44
CAP		0.02	0.04	0.05	0.11	0.18	0.37	0.62	0.72	1.09	2.22	3.50	4.84
STREET ELBOW		0.13	0.11	0.22	0.31	0.53	1.02	1.13	2.01	2.91			
UNION		0.28	0.28	0.24	0.34	0.48	0.77	1.03	1.63	2.43	3.63	5.27	12.0
CROSS		0.56	0.52	0.46	0.65	1.05	1.70	2.17	3.93	4.39			
HEX NIPPLE		0.03	0.04	0.05	0.09	0.15	0.47	0.45	0.62	1.03	1.51	2.22	4.00
6000LBS SCREWED 6000磅螺紋													
90°ELBOW		0.17	0.33	0.45	0.80	1.31	1.61	2.93	3.79	7.31	9.88	16.43	
45°ELBOW		0.11	0.27	0.39	0.63	1.07	1.27	2.24	2.54	4.37	7.01	14.16	
TEE		0.20	0.45	0.63	0.98	1.65	2.17	3.74	4.71	7.88	13.11	22.50	
COUPLING		0.08	0.13	0.20	0.34	0.50	0.87	1.09	1.94	2.87	4.20	6.10	10.04
HALF COUPLING		0.07	0.06	0.09	0.16	0.24	0.45	0.55	0.96	1.70	2.10	3.05	5.02
RED COUPLING		0.08	0.06	0.18	0.31	0.41	0.85	1.05	1.81	3.40	4.20	6.10	10.04
CAP		0.06	0.06	0.09	0.26	0.40	0.71	0.59	0.77	2.23			
PLUGS & BUSHING													
2000 / 3000 / 6000 LBS 磅 管塞 & 六角内外螺紋接头													
SQUARE HEAD		0.01	0.01	0.03	0.05	0.09	0.16	0.27	0.38	0.63	0.96	1.53	3.83
HEX HEAD		0.01	0.03	0.05	0.07	0.14	0.22	0.44	0.59	1.03	1.80	2.60	5.20
ROUND HEAD		0.02	0.45	0.07	0.12	0.20	0.34	0.55	0.79	1.47	2.34	3.26	6.24
BUSHING			0.01	0.01	0.03	0.05	0.09	0.25	0.34	0.45	0.60	1.16	3.20
3000LBS SOCKET WELD 3000磅承插焊													
90°ELBOW		0.09	0.08	0.12	0.25	0.33	0.53	0.84	1.08	1.60	3.20	5.38	10.95
45°ELBOW		0.16	0.14	0.12	0.20	0.28	0.42	0.69	0.80	1.35	2.53	5.10	9.41
TEE		0.13	0.09	0.15	0.29	0.42	0.65	1.04	1.35	2.04	3.98	5.90	17.91
COUPLING		0.04	0.05	0.07	0.13	0.17	0.29	0.45	0.59	0.86	1.40	1.78	2.85
HALF COUPLING		0.04	0.05	0.07	0.13	0.21	0.30	0.34	0.66	1.09	1.63	2.10	3.71
RED COUPLING		0.04	0.05	0.07	0.13	0.19	0.27	0.49	0.59	0.97	1.42	1.88	3.31
CAP		0.03	0.04	0.07	0.10	0.16	0.25	0.45	0.59	0.96	1.43	2.74	4.24
UNION		0.28	0.28	0.25	0.35	0.49	0.81	1.10	1.61	2.16	3.50	5.15	11.59
CROSS		0.57	0.53	0.46	0.39	0.48	0.75	1.19	1.61	2.35			
6000LBS SOCKET WELD 6000磅承插焊													
90°ELBOW				0.29	0.40	0.73	1.17	1.48	2.79	3.28			
45°ELBOW					0.36	0.57	0.92	1.11	2.01	2.09			
TEE		0.14	0.20	0.43	0.56	0.94	1.49	1.93	3.37	3.95			
COUPLING		0.05		0.14	0.24	0.27	0.44	0.60	1.11	1.62			
HALF COUPLING			0.11		0.21	0.31	0.51	0.75	1.25	1.92			
RED COUPLING					0.24	0.33	0.65	0.75	1.20	2.12			
CAP					0.16	0.23	0.36	0.64	0.94	1.41			
CROSS					0.69								



认证

CERTIFICATION



我們已经获得以下由国际认同许可的证照：
*We Have Obtained The Following Internationally
Recognized Approvals With Certificates.*



质量管理合格认证书
QUALITY MANAGEMENT
SYSTEM
Certificate No.:310095-UK



计量合格确认证书
CERTIFICATE FOR MEASUREMENT
CONFORMITY

No.(2009)量认企(泰)字(131001)号



中华人民共和国
特种设备製造许可证
Manufacture License of Special Equipment
People's Republic of China

(压力管道)

Certificate No. TS2732047-2014



欧盟压力管道元件认证书
Pressure Equipment Directive
Certificate NO.:IDD/S-10/184



中国船级社
工厂认可证书
CHINA CLASSIFICATION SOCIETY
CERTIFICATE OF WORKS APPROVAL
Certificate. NJ11W00037



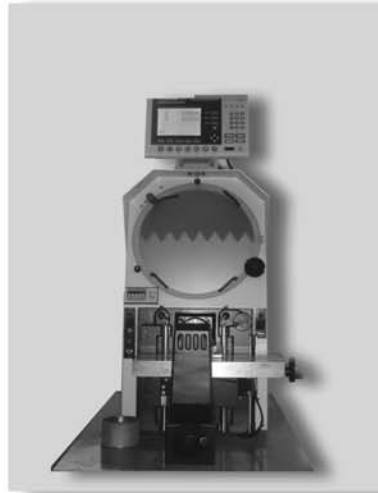


BOTH WELL

检验设备 INSPECTION APPARATUS



硬度计 HARDNESS TESTER



精密光学投影机
PRECISION PROJECTOR



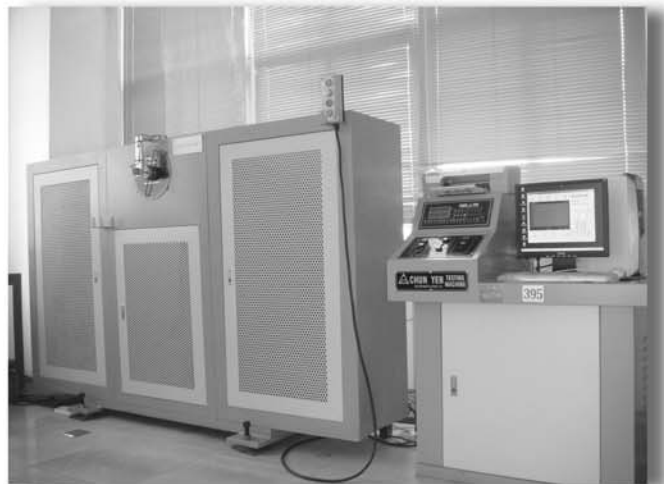
分光分析机
OPTICAL EMISSION SPECTROMETER



万能试验机
UNIVERSAL TESTING MACHINE



水压试验机
HYDROSTATIC TESTING MACHINE



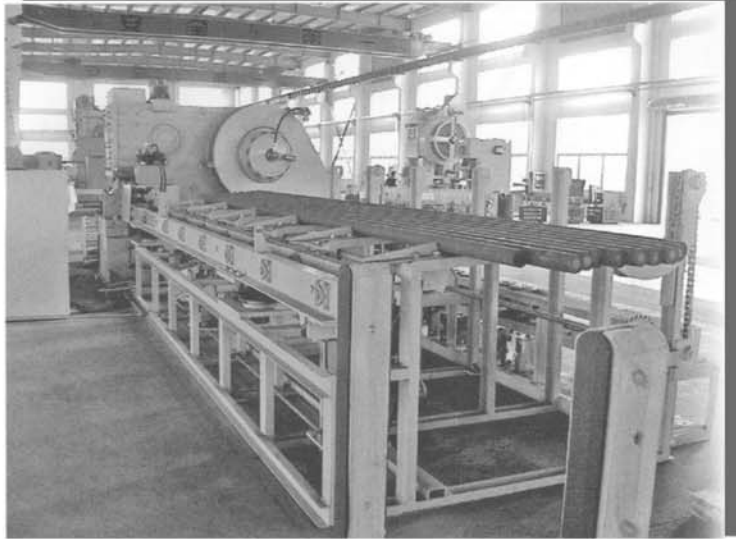
冲击试验机
IMPACT TESTING MACHINE





BOTH WELL

设备 THE EQUIPMENT



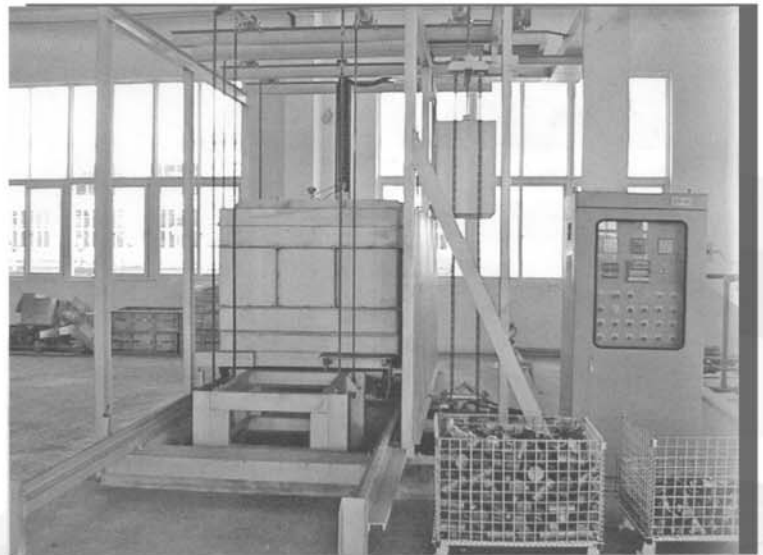
切料机 COLD-HOT ROLL TYPE CUTTING M/C



模锻机 FP HIGH SPEED FORGING PRESS



抛丸机 SHOT BLASTING MACHINE



热处理设备 HEAT TREATMENT EQUIPMENT



BOTH WELL

设备 THE EQUIPMENT



加工中心
VERTICAL MACHINING CENTER



钻孔机设备操作现场
DRILLING AREA



CNC车床加工操作现场
CNC MACHINING AREA



BOTH WELL

设备 THE EQUIPMENT



材料仓库
RAW MATERIAL AREA



毛胚仓库
ROUGH FORGED AREA



成品仓库
PRODUCT AREA



BOTH WELL

厂区
FACTORY



专业製造：
碳钢 合金钢 不锈钢
丝口、溶接类锻造管配件



柏纬(泰州)铁工有限公司

地址：江苏省姜堰市经济开发区天目路669号

电话：86-523-88863918（19-25）

传真：86-523-88863926

WEB :<http://www.bothwell.com.cn>
E-MAIL:bwjy@www.bothwell.com.tw

Millimeters

CAT. NO:120703